

AIKEN RGNL (AIK)
AIKEN, SOUTH CAROLINA

JUNPR SIX DEPARTURE (RNAV)

AUGUSTA DEP CON★
119.15 284.625
CLNC DEL
126.075
CTAF
122.8

**TOP ALTITUDE:
ASSIGNED BY ATC**

RNAV 1 - DME/DME/IRU or GPS required.

RADAR required.

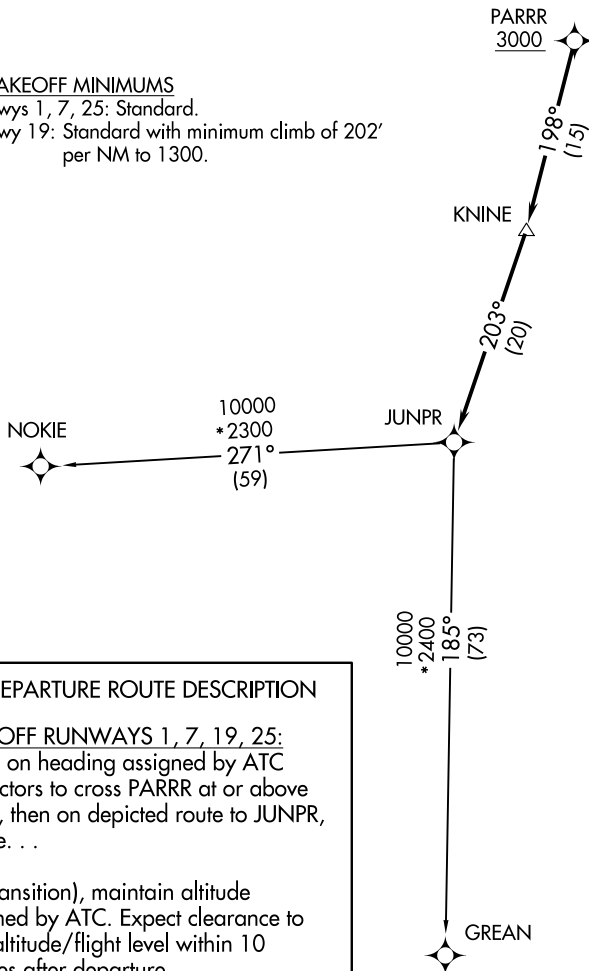


NOTE: Do not exceed 250K until advised by ATC.

TAKEOFF MINIMUMS

Rwys 1, 7, 25: Standard.

Rwy 19: Standard with minimum climb of 202' per NM to 1300.



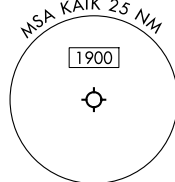
DEPARTURE ROUTE DESCRIPTION

TAKEOFF RUNWAYS 1, 7, 19, 25:

Climb on heading assigned by ATC
for vectors to cross PARRR at or above
3000, then on depicted route to JUNPR,
thence. . .

... (transition), maintain altitude assigned by ATC. Expect clearance to filed altitude/flight level within 10 minutes after departure.

GREEN TRANSITION (JUNPR6.GREEN)
NOKIE TRANSITION (JUNPR6.NOKIE)



NOTE: Chart not to scale.

JUNPR SIX DEPARTURE (RNAV)

(JUNPR6.JUNPR) 14JUL22

AIKEN, SOUTH CAROLINA
AIKEN RGNL (AIK)

SE-2, 10 JUL 2025 to 07 AUG 2025