

VORTAC DAS	APP CRS	Rwy Idg	N/A
116.9	198°	TDZE	N/A
Chan 116		Apt Elev	70

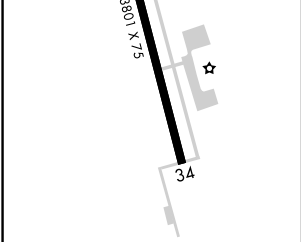
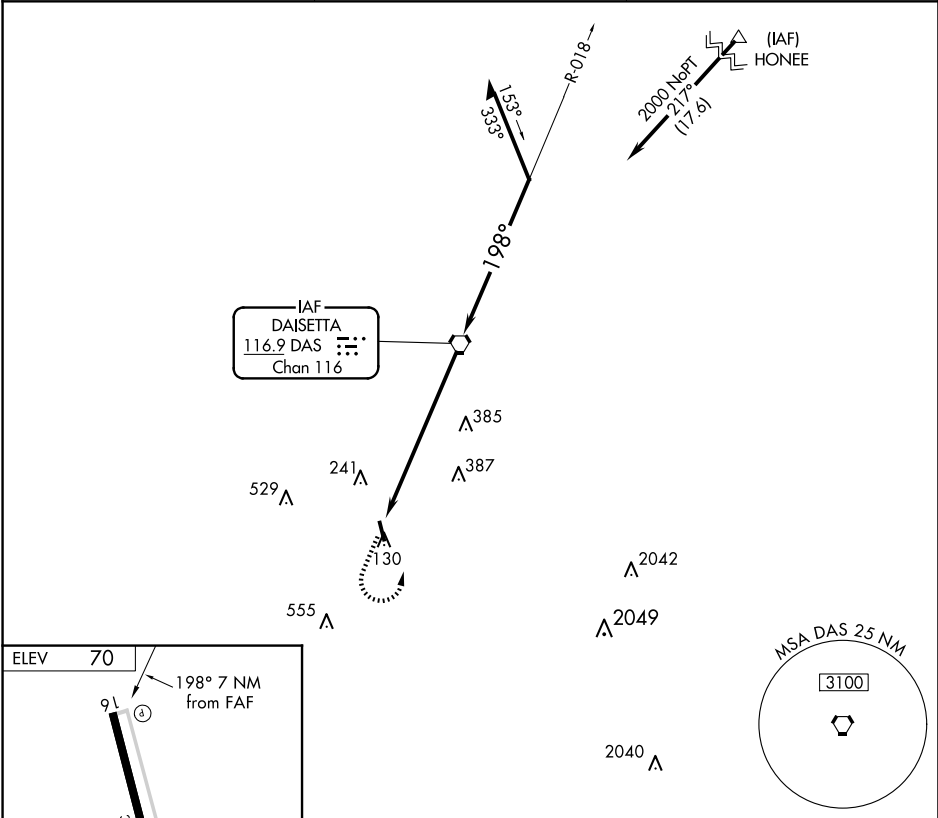
VOR-A
LIBERTY MUNI (T78)


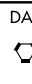

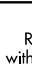
**NA**

Use George Bush Intcnl/Houston
altimeter setting. Procedure NA at night.
Helicopter visibility reduction below 1 SM NA.

MISSED APPROACH: Climb to 2000, then left turn direct DAS VORTAC.

AWOS-3PT 120.775	HOUSTON APP CON 119.7 281.4	CTAF 122.9 0
----------------------------	---------------------------------------	------------------------



2000	DAS	DAS VORTAC		Remain within 10 NM	
					
DAS 7		018°		198° 2000	
7 NM		2000		2000	
FAF to MAP 7 NM		7 NM			
CATEGORY	A	B	C	D	
CIRCLING	600-1 530 (600-1)		NA		

SC-5, 10 JUL 2025 to 07 AUG 2025

SC-5, 10 JUL 2025 to 07 AUG 2025