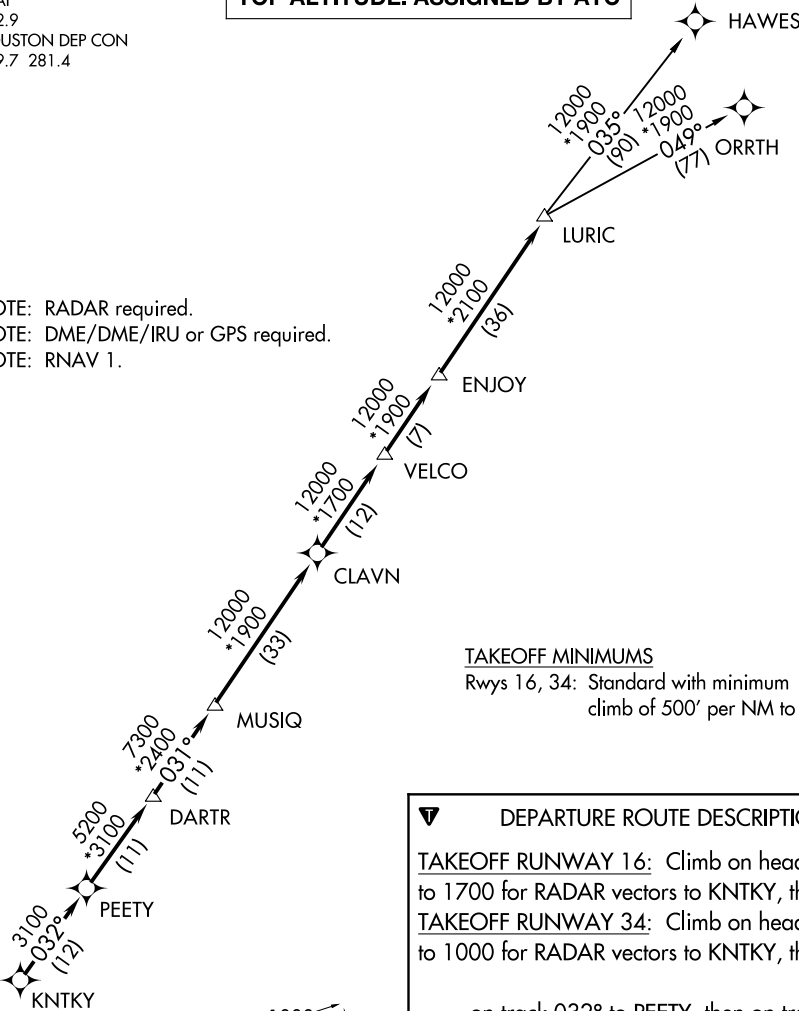


CTAF  
122.9  
HOUSTON DEP CON  
119.7 281.4

TOP ALTITUDE: ASSIGNED BY ATC

NOTE: RADAR required.  
NOTE: DME/DME/IRU or GPS required.  
NOTE: RNAV 1.



TAKEOFF MINIMUMS  
Rwys 16, 34: Standard with minimum  
climb of 500' per NM to 580.

DEPARTURE ROUTE DESCRIPTION

TAKEOFF RUNWAY 16: Climb on heading 161° to 1700 for RADAR vectors to KNTKY, thence....

TAKEOFF RUNWAY 34: Climb on heading 341° to 1000 for RADAR vectors to KNTKY, thence....

... on track 032° to PEETY, then on track 032° to DARTR, then on track 031° to MUSIQ, then on track 031° to CLAVN, then on track 031° to VELCO, then on track 031° to ENJOY, then on track 031° to LURIC, then on (transition). Maintain ATC assigned altitude. Expect filed altitude 10 minutes after departure.

HAWES TRANSITION (LURIC8.HAWES)

ORRTH TRANSITION (LURIC8.ORRTH)

NOTE: Chart not to scale.