

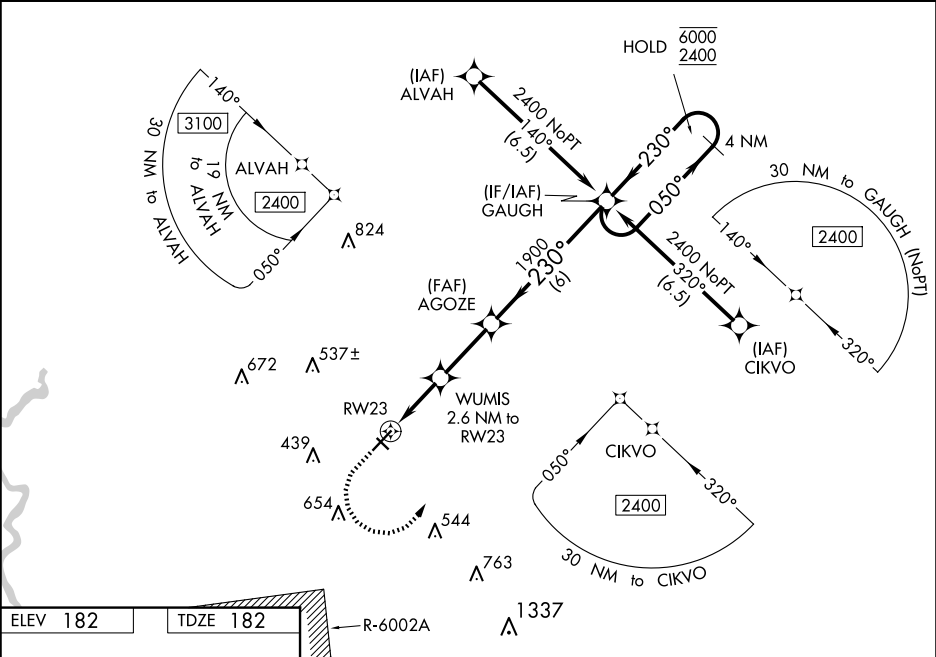
WAAS CH <b>58141</b> <b>W23A</b>	APP CRS <b>230°</b>	Rwy Idg <b>5501</b> TDZE <b>182</b> Apt Elev <b>182</b>
--	------------------------	---

RNAV (GPS) RWY 23

SUMTER (SMS)

RNP APCH. <div><div>⚠</div><div>Circling NA to Rws 14 and 32. For uncompensated Baro-VNAV systems, LNAV/VNAV NA below -1.5°C or above 54°C. Inop table does not apply to LPV all Cats. For inop ALS increase LNAV/VNAV Cat A/B visibility to ¾ SM.</div></div>	ODALS <div><div>⬆</div><div>⋮</div></div>	MISSED APPROACH: Climb to 600 then climbing left turn to 2400 direct GAUGH and hold.
---	--	---

AWOS-3 <b>118.075</b>	SHAW APP CON★ <b>125.4</b>	UNICOM <b>122.7 (CTAF)</b> <b>0</b>
--------------------------	-------------------------------	--



ELEV 182	TDZE 182	<div><div>600</div><div>2400</div><div>GAUGH</div></div>			
<div><div>230°</div><div>30 NM to RW23</div><div>3081 X 120</div><div>5501 X 100</div><div>3081 X 120</div><div>5501 X 100</div></div>		<div><div>4 NM Holding Pattern</div><div>GAUGH</div><div>050° → 6000</div><div>← 230° 2400</div><div>GP 3.00° TCH 44</div></div>			
<div><div>*LNAV only.</div><div>WUMIS 2.6 NM to RW23</div><div>*1 NM to RW23</div><div>1040*</div><div>1900</div><div>1900</div><div>1 NM 1.6 NM 2.7 NM 6 NM</div></div>					
CATEGORY	A	B	C	D	
LPV DA	382-¾		200 (200-¾)		
LNAV/VNAV DA	460-¾		278 (300-¾)		
LNAV MDA	540-¾ 358 (400-¾)		540-⅞ 358 (400-⅞)		
CIRCLING	600-1 418 (500-1)	680-1 498 (500-1)	1000-2½ 818 (900-2½)	1000-2¾ 818 (900-2¾)	