

APP CRS

079°

Rwy Idg

5505

TDZE

540

Apt Elev

564

RNAV (GPS) RWY 8

HOPKINSVILLE-CHRISTIAN COUNTY (HVC)

RNP APCH.

▼

NA

Rwy 8 helicopter visibility reduction below 1 SM NA. When local altimeter setting not received, use Clarksville altimeter setting and increase all MDA 40 feet. Procedure NA at night.

MISSED APPROACH: Climb to 3000 direct UYURI and left turn via 338° track to WASMO and hold.

AWOS-3

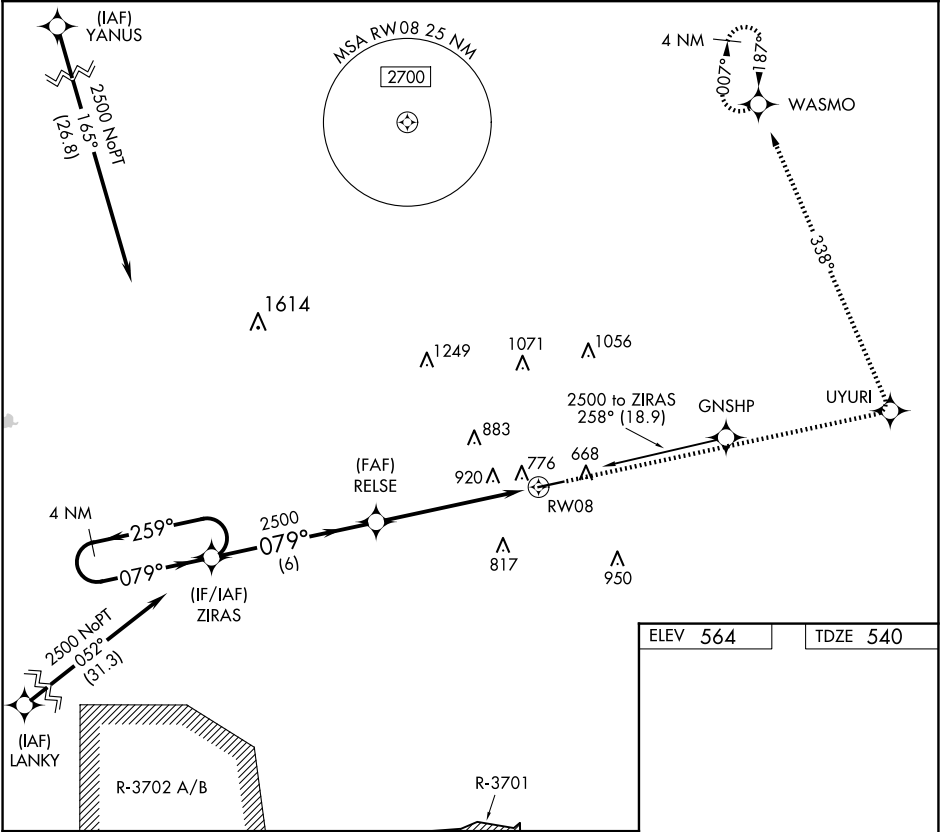
132.575

CAMPBELL APP CON

118.1 269.525

UNICOM

122.8 (CTAF) 0



4 NM Holding Pattern

ZIRAS

RELSE

3000

UYURI

338° tr

WASMO

2500

259°

079°

2500

079°

2500

3.05°

TCH 40

6 NM

5.9 NM

RW08

VGSI and descent angles not coincident (VGSI Angle 3.50/TCH 38).

0.5% UP

5505 X 100

079° to RW08

CATEGORY	A	B	C	D
LNNAV MDA	1220-1	680 (700-1)	1220-2 680 (700-2)	1220-2¼ 680 (700-2¼)

MIRL Rwy 8-26 0

REIL Rws 8 and 26 0