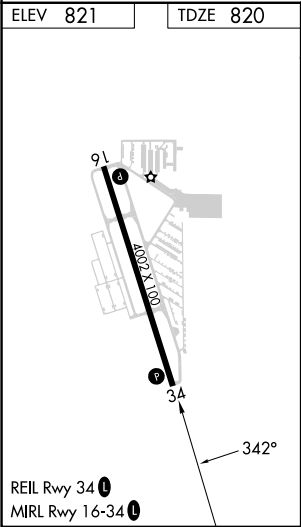
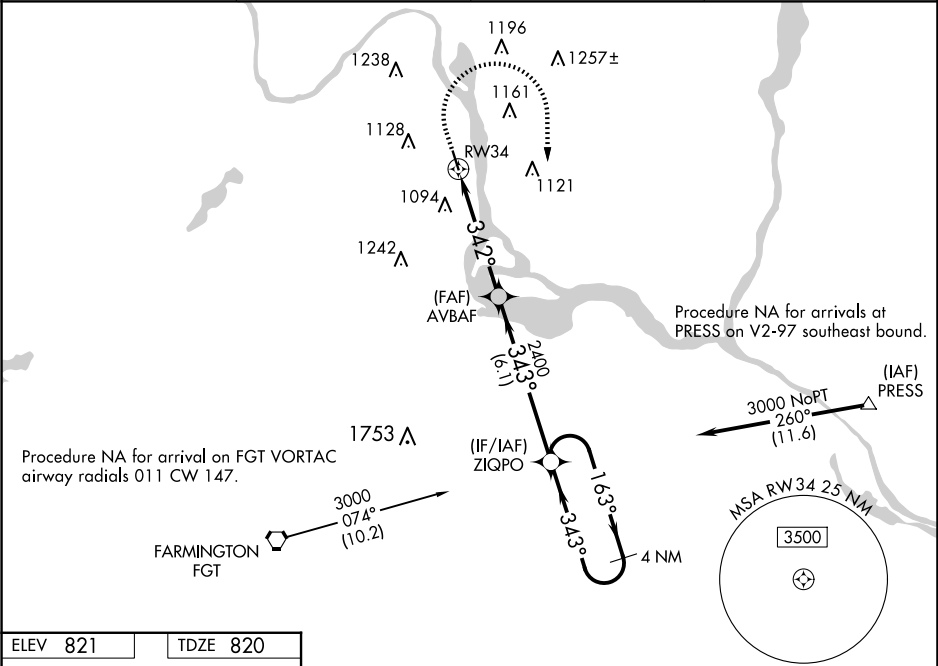


WAAS CH 99636 W34A	APP CRS 342°	Rwy Idg TDZE Apt Elev	4002 820 821
--	------------------------	-----------------------------	---

RNAV (GPS) RWY 34

SOUTH ST PAUL MUNI/RICHARD E FLEMING FLD (SGS)

RNP APCH - GPS. ⚠ For uncompensated Baro-VNAV systems, LNAV-VNAV NA below -22°C or above 54°C. Rwy 34 helicopter visibility reduction below ¾ SM NA.		MISSED APPROACH: Climb to 1400 then climbing right turn to 3000 direct ZIQPO and hold.	
AWOS-3 119.425	MINNEAPOLIS APP CON 121.2 335.65	CLNC DEL 118.2	UNICOM 122.7 (CTAF) 0



1400		3000	ZIQPO	VGSI and RNAV glidepath not coincident (VGSI Angle 3.00/TCH 40).		4 NM Holding Pattern
1400		3000	ZIQPO	4 NM Holding Pattern		GP 3.00 TCH 36
1.4 NM to RW34		2400	AVBAF	342°		343°
1.4		3.5 NM	6.1 NM	163°		3000
CATEGORY	A	B	C	D		
LPV DA	1102-1		282 (300-1)			
LNAV/VNAV DA	1378-1½		558 (600-1½)			
LNAV MDA	1300-1	480 (500-1)	1300-1½	480 (500-1½)		
CIRCLING	1400-1 579 (600-1)	1540-1 719 (800-1)	1540-2 719 (800-2)	1620-2 ½ 799 (800-2½)		