

LOC/DME FSGS 108.35 Chan 20 (Y)	APP CRS 342°	Rwy Idg 4002 TDZE 820 Apt Elev 821
---	------------------------	---

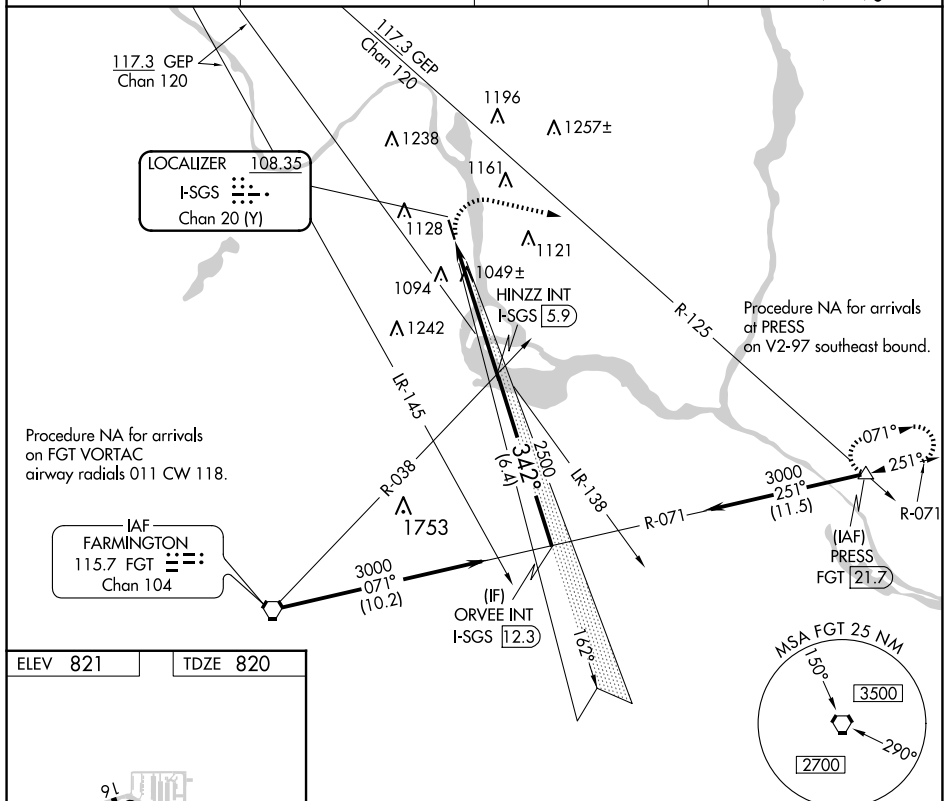
LOC RWY 34

SOUTH ST PAUL MUNI/RICHARD E FLEMING FLD (SGS)

T Helicopter visibility reduction below $\frac{3}{4}$ SM NA. When local
A NA altimeter setting not received, use Minneapolis-St Paul Int'l/
 Wold-Chamberlain altimeter setting and increase all MDA
 40 feet. Increase Circling Cat C/D visibility $\frac{1}{4}$ mile.

MISSED APPROACH: Climbing right turn to 3000 on heading 100° and on GEP VORTAC R-125 to PRESS INT/21.7 DME and hold.

AWOS-3 119.425	MINNEAPOLIS APP CON 121.2 335.65	CLNC DEL 118.2	UNICOM 122.7 (CTAF) L
--------------------------	--	--------------------------	---------------------------------

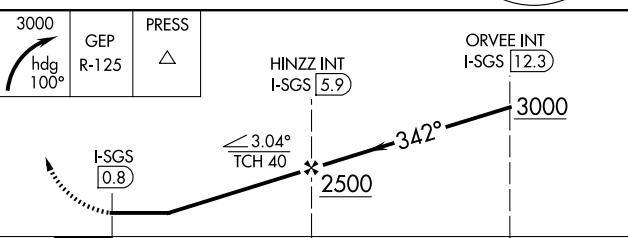


REIL Rwy 34

MRL Rwy 16-34

FAF to MAP 5.1 NM

Knots	60	90	120	150	180
Min:Sec	5:06	3:24	2:33	2:02	1:42

				
<div>3000 hdg 100° GEP R-125 PRESS \triangle</div> <div>HINZZ INT I-SGS 5.9</div> <div>ORVEE INT I-SGS 12.3</div> <div>3000</div> <div>3.04° TCH 40</div> <div>2500</div> <div>342°</div> <div>5.1 NM</div> <div>6.4 NM</div>				
CATEGORY	A	B	C	D
S-34	1300-1	480 (500-1)	1300-1 ³ / ₈	480 (500-1 ³ / ₈)
CIRCLING	1400-1 579 (600-1)	1540-1 719 (800-1)	1540-2 719 (800-2)	1620-2 ¹ / ₂ 799 (800-2 ¹ / ₂)