

WAAS CH <b>93827</b> <b>W34A</b>	APP CRS <b>342°</b>	Rwy Idg TDZE <b>620</b> Apt Elev <b>628</b>	<b>RNAV (GPS) RWY 34</b> ARLINGTON MUNI (GKY)
--	------------------------	---	--

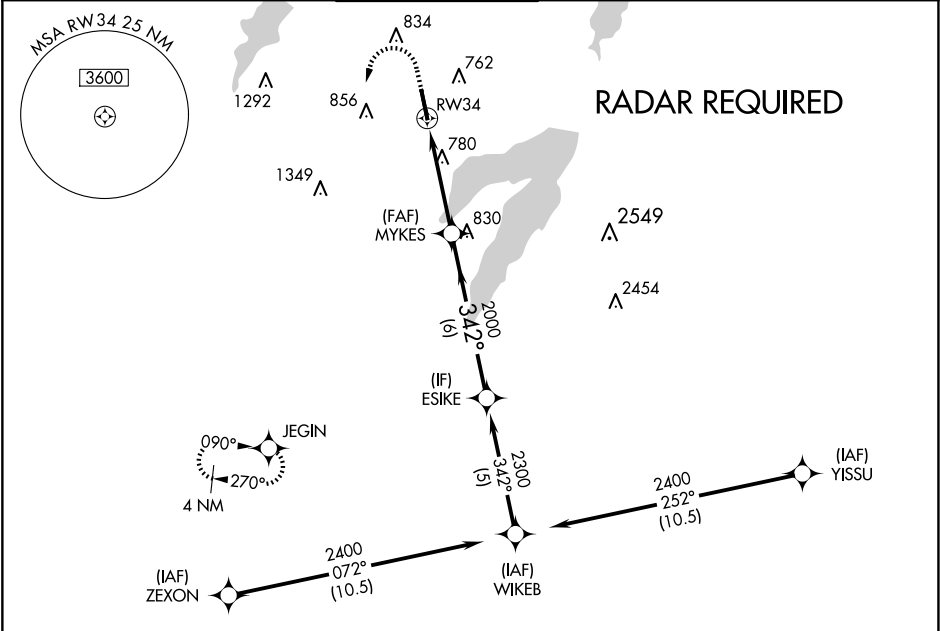
⚠

When local altimeter setting not received, use Grand Prairie Muni dltmeter setting. For uncompensated Baro-VNAV systems, LNAV/VNAV NA below -16°C (4°F) or above 54°C (130°F). DME/DME RNP-0.3 NA. Inop table does not apply to LPV. For inop MALSR increase LNAV Cat A, B visibility to 1 mile.

MALSR

MISSED APPROACH: Climb to 1100 then climbing left turn to 2800 direct JEGIN and hold.

ASOS <b>127.375</b>	LONE STAR APP CON <b>135.975 379.9</b>	ARLINGTON TOWER ★ <b>128.625 (CTAF) 0</b>	GND CON <b>121.875</b>	CLNC DEL <b>121.875</b>	CLNC DEL <b>118.85</b> (When twr closed)
------------------------	---	--	---------------------------	----------------------------	--



ELEV 628

TDZE 620

91

④

600 X 100

0.5% UP

☆

TWR 724

MRL Rwy 16-34

REIL Rwy 16

342°

34

1100

2800

JEGIN

VGSI and RNAV glidepath not coincident (VGSI Angle 3.00/TCH 55).

\*LNAV only.

MYKES

2000

ESIKE

2300

1.3 NM

2.9 NM

6 NM

342°

2000

GP 3.00°

TCH 60

CATEGORY	A	B	C	D
LPV DA	820-¾		200 (200-¾)	NA
LNAV/VNAV DA	1021-¾		401 (400-¾)	NA
LNAV MDA	1060-¾		440 (500-¾)	NA
CIRCLING	1100-1 472 (500-1)	1140-1 512 (600-1)	1220-1½ 592 (600-1½)	NA