

WAAS	APP CRS	Rwy Idg	6051
CH 82512	054°	TDZE	439
W05A		Apt Elev	439

RNAV (GPS) RWY 5

MADISONVILLE RGNL (2I0)

RNP APCH - GPS.

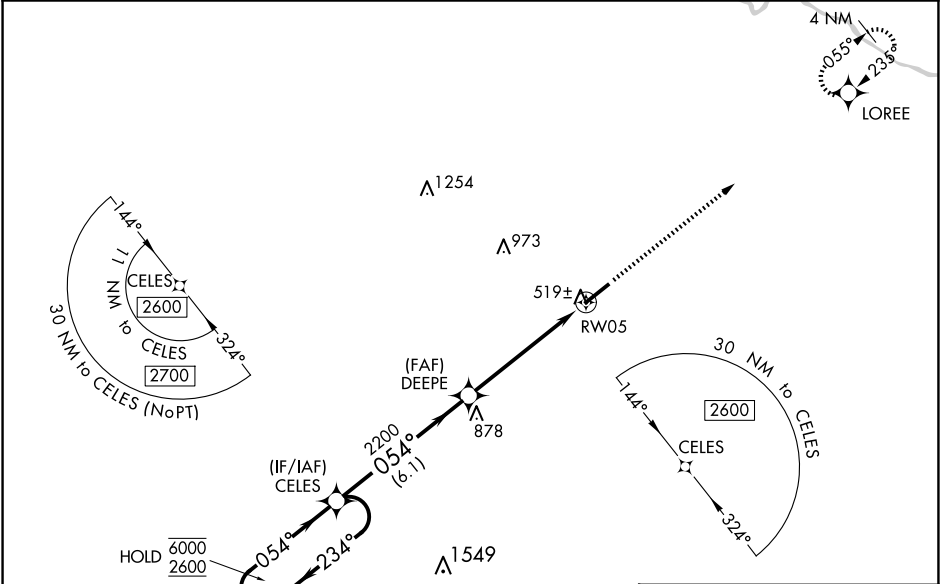
▼

▲

Baro-VNAV and VDP NA when using EVV altimeter setting. Rwy 5 helicopter visibility reduction below ¾ SM NA. For uncompensated Baro-VNAV systems, LNAV/VNAV NA below -15°C or above 54°C. When local altimeter setting not received, use EVV altimeter setting and increase LPV DA to 788 feet and all visibilities ¼ SM; increase LNAV/VNAV DA to 818 feet and all visibilities ⅓ SM; increase all MDAs 100 feet and LNAV visibility Cat C/D ¼ SM, and Circling visibility Cat C ¼ SM.

MISSED APPROACH:
Climb to 2600 direct LOREE and hold.

AWOS-3 126.475	EVANSVILLE APP CON ★ 124.025 290.9	CLNC DEL 120.1	UNICOM 122.7 (CTAF) 0
-------------------	---------------------------------------	-------------------	--------------------------



4 NM Holding Pattern

CELES

6000
2600

GP 3.00°
TCH 53

2600
LOREE

DEEPE

2200

1.5 NM to RWY05

RWY05

6.1 NM

3.8 NM

1.5 NM

CATEGORY	A	B	C	D
LPV DA		689-¾	250 (300-¾)	
LNAV/VNAV DA		719-⅞	280 (300-⅞)	
LNAV MDA	980-1	541 (600-1)	980-1½	541 (600-1½)
CIRCLING	980-1	541 (600-1)	980-1½ 541 (600-1½)	1340-3 901 (1000-3)

HIRL Rwy 5-23 0

REIL Rwy 5 0