

WAAS CH 77911 W23A	APP CRS 235°	Rwy Idg 6051 TDZE 418 Apt Elev 439
--	------------------------	---

RNAV (GPS) RWY 23
MADISONVILLE RGNL (2I0)

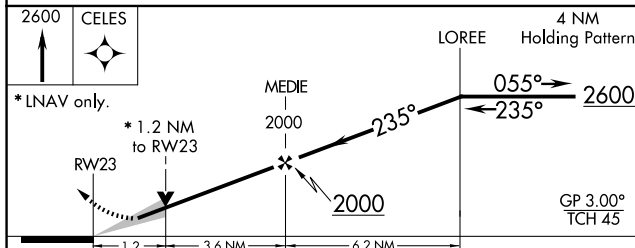
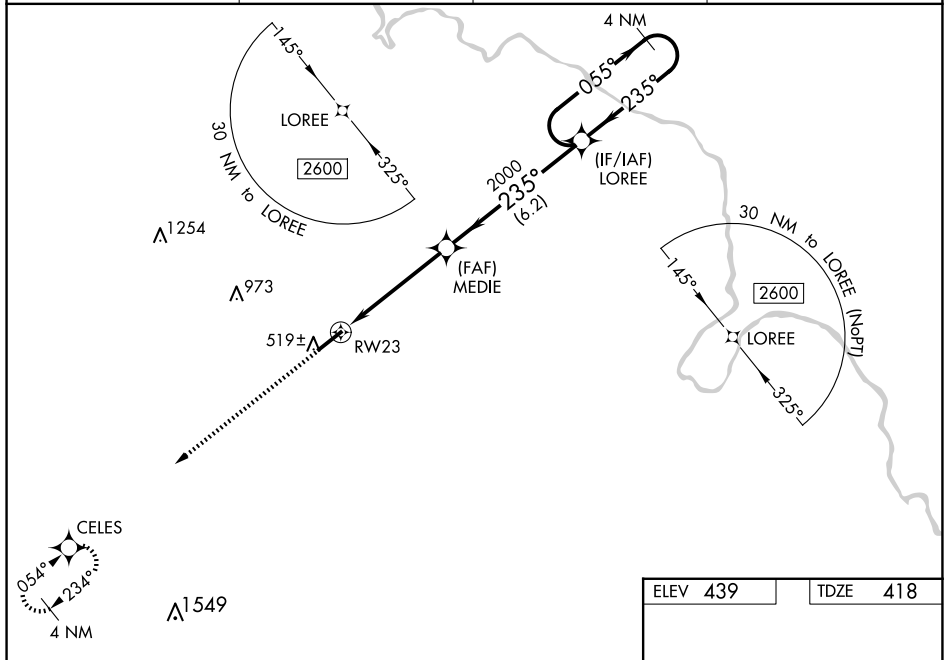
⚠ For uncompensated Baro-VNAV systems, LNAV/VNAV NA below -15°C (5°F) or above 54°C (130°F). Baro-VNAV and VDP NA when using Evansville altimeter setting. DME/DME RNP-3 NA. When local altimeter setting not received, use Evansville altimeter setting and increase LPV DA to 773 feet and all visibilities $\frac{1}{4}$ SM, LNAV/VNAV DA to 829 feet and all visibilities $\frac{3}{8}$ SM, increase all MDA 100 feet and LNAV Cats C/D visibility $\frac{1}{8}$ SM. For Inop AL increase LPV and LNAV/VNAV all Cats and LNAV Cat C/D visibility $\frac{1}{8}$ SM. For Inop ALS when using Evansville altimeter setting, increase LPV and LNAV/VNAV all Cats and LNAV Cats C/D visibility $\frac{1}{8}$ SM.


ODALS



MISSED APPROACH:
Climb to 2600 direct
CELES and hold.

AWOS-3 126.475	EVANSVILLE APP CON ★ 124.025 290.9	CLNC DEL 120.1	UNICOM 122.7 (CTAF) 0
--------------------------	--	--------------------------	---------------------------------



CATEGORY		A		B		C		D	
LPV	DA	674-3/4				256 (300-3/4)			
LNAV/ VNAV	DA	730-7/8				312 (300-7/8)			
LNAV	MDA	840-3/4 422 (500-3/4)				840-1 1/8 422 (500-1 1/8)			
 CIRCLING		860-1 421 (500-1)		900-1 461 (500-1)		920-1 1/2 481 (500-1 1/2)		1340-3 901 (1000-3)	

