

VOR/DME GFK <b>114.3</b> Chan <b>90</b>	APP CRS <b>344°</b>	Rwy Ldg <b>7351</b> TDZE <b>845</b> Apt Elev <b>845</b>
---	------------------------	---

VOR RWY 35L  
GRAND FORKS INTL (GFK)

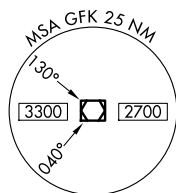
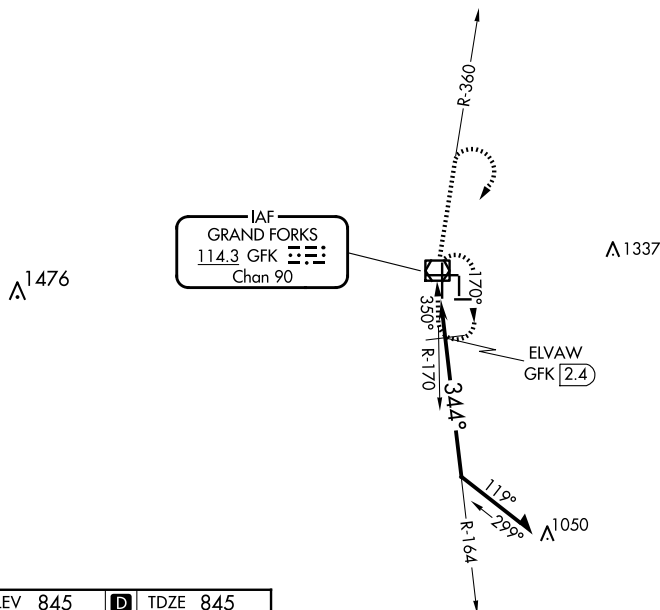
When local altimeter setting not received, use Crockston altimeter setting and increase all MDA 80 feet; increase Cat C/D visibility to 1¼ SM and Circling Cat C visibility ¼ SM. Increase ELVAV fix minimums Cat C/D visibility to RVR 4500 and Circling Cat C visibility ¼ SM. For inop ALS, increase S-35L Cat C/D visibility to 1¾ SM. ELVAV fix minimums: For inop ALS, increase S-35L Cat C/D visibility to RVR 5500.

MALSR



**MISSED APPROACH:** Climb to 1300 then climb to 3600 on GFK R-360 then right turn direct GFK VOR/DME and hold.

ATIS <b>119.4</b>	GRAND FORKS APP CON ★ <b>118.1 318.1</b>	GRAND FORKS TOWER★ <b>118.4(CTAF) 350.35</b>	GND CON <b>124.575</b>	CLNC DEL <b>135.725</b>	UNICOM <b>122.95</b>
----------------------	---	---	---------------------------	----------------------------	-------------------------



ELEV 845	<b>D</b>	TDZE 845
MIRL Rwy 9L-27R, 9R-27L and 17L-35R <b>(L)</b>		
HIRL Rwy 17R-35L <b>(L)</b>		
REIL Rwys 17R, 9L, and 27R <b>(L)</b>		

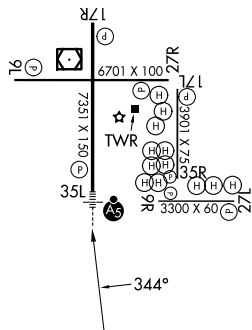


Diagram illustrating navigation parameters for GFK VOR/DME and ELVAW GFK.

Angles and Distances:

- 1300 (up arrow)
- 3600 (up arrow)
- GFK R-360 (curved arrow)
- GFK VOR/DME
- 164°
- 2500
- 34°
- 1360\*
- 3.01°
- TCH 55
- 2.4
- 1 NM
- 1.4 NM

Remain within 10 NM

VGSI and descent angles not coincident (VGSI Angle 2.76/TCH 61).

\*1440 when using Crookston altimeter setting.

CATEGORY	A	B	C	D
S-35L	1360/24	515 (600-½)	1360/55	515 (600-1)
<b>C</b> CIRCLING	1360-1	515 (600-1)	1400-1½ 555 (600-1½)	1420-2 575 (600-2)

ELVAW FIX MINIMUMS

S-35L	1220/24	375 (400-½)	1220/40	375 (400-¾)
<b>C</b> CIRCLING	1260-1 415 (500-1)	1300-1 455 (500-1)	1400-1½ 555 (600-1½)	1420-2 575 (600-2)