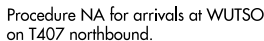


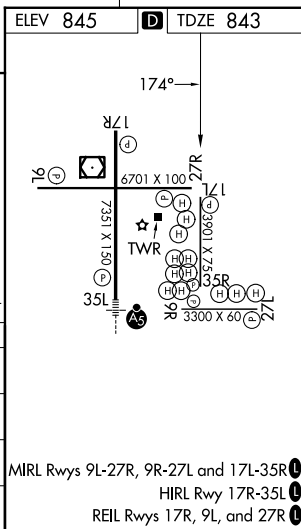
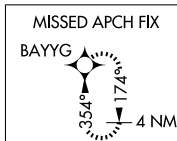
RNAV (GPS) RWY 17L
GRAND FORKS INTL (GFK)

MISSED APPROACH: Climb to 2600 direct BAYYG and hold.

UNICOM
122.95

Procedure NA for arrival on GFK VOR/DME
airway radials 276 CW 071.

Δ 1337



GRAND FORKS INTL (GFK)
RNAV (GPS) RWY 17L

NC-1, 10 JUL 2025 to 07 AUG 2025