
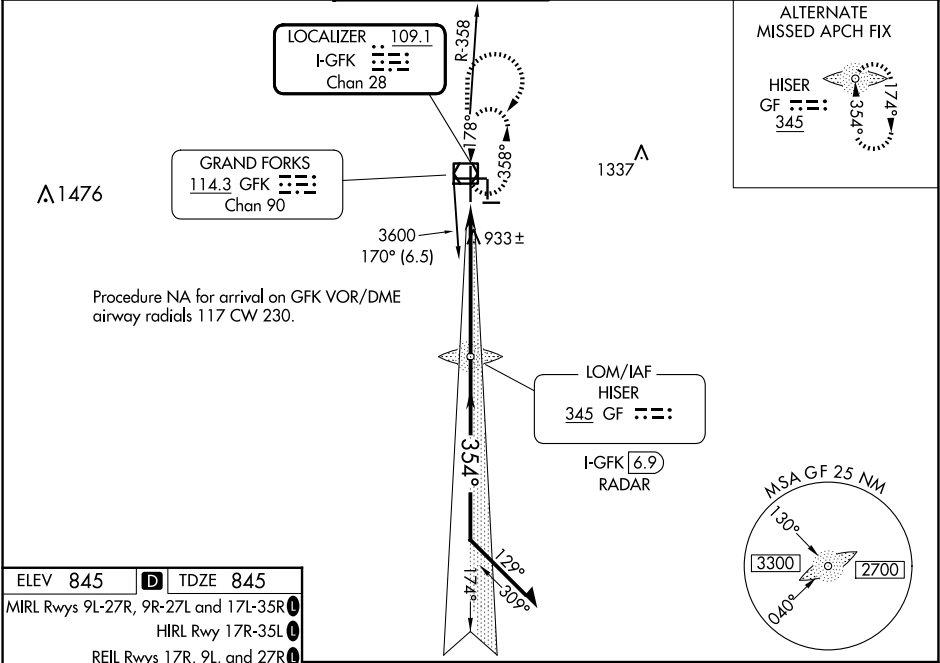


LOC/DME I-GFK 109.1 Chan 28	APP CRS 354°	Rwy Ldg TDZE Apt Elev 7351 845 845	ILS or LOC RWY 35L GRAND FORKS INTL (GFK)	
--	------------------------	--	--	--

ADF or DME or RADAR required.			MALSR 	MISSED APPROACH: Climb to 3600 then right turn direct GFK VOR/DME and hold.	
ATIS 119.4	GRAND FORKS APP CON 118.1 318.1	GRAND FORKS TOWER 118.4 (CTAF) 350.35	GND CON 124.575	CLNC DEL 135.725	UNICOM 122.95



ELEV 845	D	TDZE 845
MIRL Rwy 9L-27R, 9R-27L and 17L-35R		
HIRL Rwy 17R-35L		
REIL Rwy 17R, 9L, and 27R		

