

| | | |
|--|------------------------|---|
| WAAS CH 50312 W35A | APP CRS 347° | Rwy Idg TDZE 295 Apt Elev 295 |
|--|------------------------|---|

RNAV (GPS) RWY 35

TACOMA NARROWS (TIW)

RNP APCH.

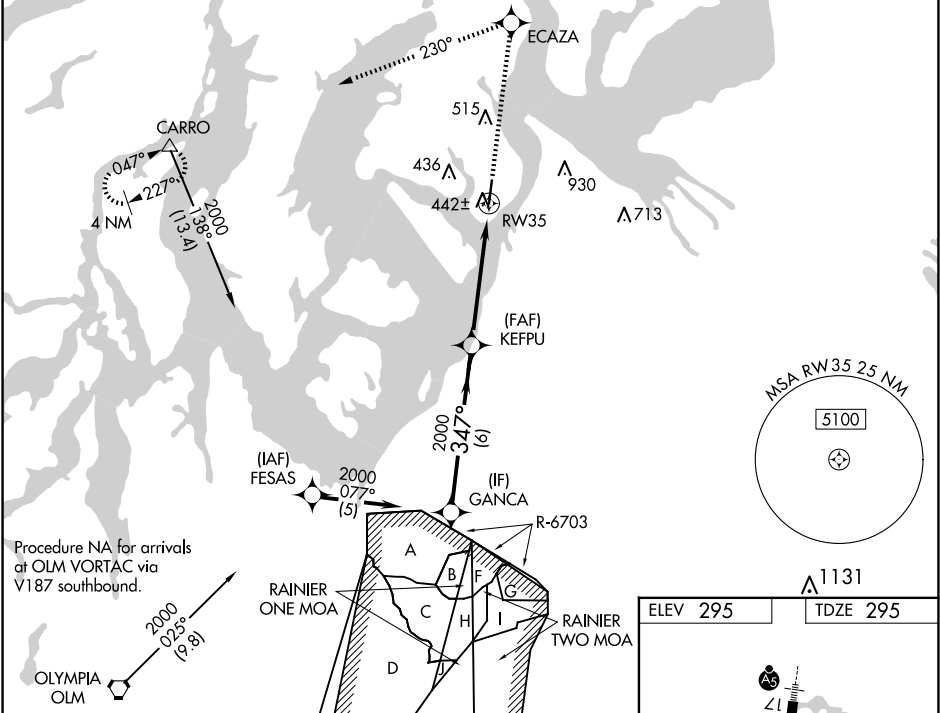
▼

⚠

Baro-VNAV NA when using McChord Fld altimeter setting. For uncompensated Baro-VNAV systems, LNAV/VNAV NA below -15°C (5°F) or above 48°C (118°F).
Circling NA east of Rwy 17-35. When local altimeter setting not received, use McChord Fld altimeter setting and increase all DA 25 feet and all MDA 40 feet.

MISSED APPROACH: Climb to 4000 direct ECAZA and left turn via 230° track to CARRO and hold, continue climb-in-hold to 4000.

| | | | | |
|-----------------------|---------------------------------------|---|-------------------------|-------------------------|
| ATIS 124.05 | SEATTLE APP CON 120.1 290.9 | TACOMA TOWER ★ 118.5 (CTAF) 0 253.5 | GND CON 121.8 | UNICOM 122.95 |
|-----------------------|---------------------------------------|---|-------------------------|-------------------------|



| | | | | | | |
|-------------------|--|---|-------------|-----------------|------------------|------------|
| Procedure Turn NA | | VGSi and RNAV glidepath not coincident (VGSi Angle 3.00/TCH 45) | | 4000 | ECAZA | CARRO |
| GP 3.00° TCH 51 | | 2000 | 347° | 2000 | *1.6 NM to RWY35 | *LNAV only |
| | | 6 NM | | 3.5 NM | 1.6 NM | |
| CATEGORY | | A | B | C | D | |
| LPV DA | | 561-7/8 | | 266 (300-7/8) | | |
| LNAV/VNAV DA | | 769-13/4 | | 474 (500-13/4) | | |
| LNAV MDA | | 840-1 | 545 (600-1) | 840-1 1/2 | 840-1 3/4 | |
| | | | | 545 (600-1 1/2) | 545 (600-1 3/4) | |
| CIRCLING | | 980-1 | 685 (700-1) | 980-2 | 980-2 1/4 | |
| | | | | 685 (700-2) | 685 (700-2 1/4) | |

