

WAAS  
CH **82608**  
**W17A**

APP CRS  
**167°**

Rwy ldg  
TDZE **294**  
Apt Elev **295**

**RNAV (GPS) RWY 17**

TACOMA NARROWS (TIW)

RNP APCH.

▼

VDP NA with McChord Fld altimeter setting. For inoperative MALS, increase LPV all Cats visibility to 1 1/2 mile. Circling NA east of Rwy 17/35.

▲

Baro-VNAV NA when using McChord Fld altimeter setting. For uncompensated Baro-VNAV systems, LNAV/VNAV NA below -15°C (5°F) or above 48°C (118°F). When local altimeter setting not received, use McChord Fld altimeter setting and increase all DA 25 feet, all MDA 40 feet, and increase LPV all Cats visibility 1/2 mile.

MALS

⦿

AS

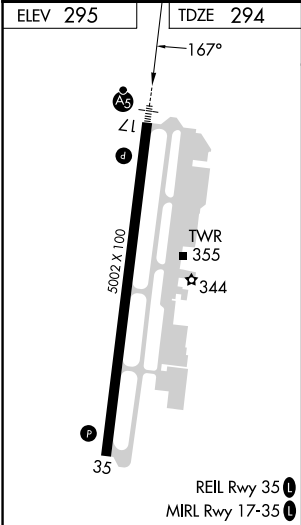
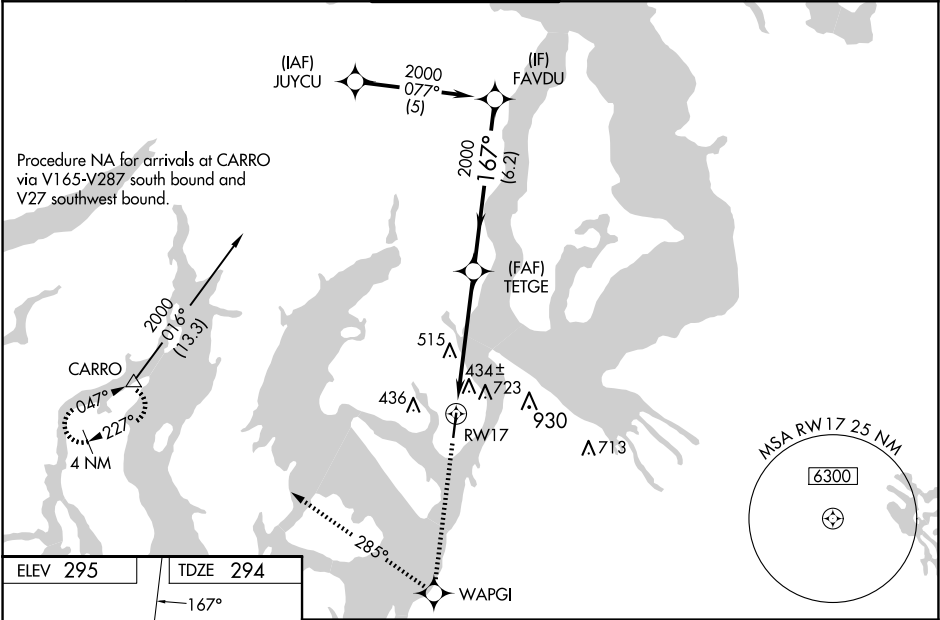
⦿

AS

MISSED APPROACH:

Climb to 4000 direct WAPGI and right turn via 285° track to CARRO and hold, continue climb-in-hold to 4000.

ATIS <b>124.05</b>	SEATTLE APP CON <b>120.1 290.9</b>	TACOMA TOWER ★ <b>118.5 (CTAF) 0 253.5</b>	GND CON <b>121.8</b>	UNICOM <b>122.95</b>
-----------------------	---------------------------------------	---	-------------------------	-------------------------



4000

WAPGI

CARRO

TETGE

FAVDU

Procedure Turn NA

\* LNAV only.

\* 2 NM to RW17

RW17

2 NM

3.1 NM

6.2 NM

GP 3.00°

TCH 52

CATEGORY	A	B	C	D
LPV DA	638-5/8 344 (400-5/8)			
LNAV/VNAV DA	992-2 698 (700-2)			
LNAV MDA	980-1/2 686 (700-1/2)		980-1 1/2 686 (700-1 1/2)	
CIRCLING	980-1 685 (700-1)		980-2 685 (700-2)	980-2 1/4 685 (700-2 1/4)