

LOC I-TIW 109.1	APP CRS 167°	Rwy Idg TDZE 294 Apt Elev 295
---------------------------	------------------------	---

ILS or LOC RWY 17

TACOMA NARROWS (TIW)

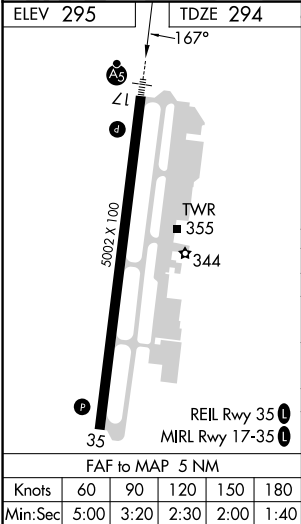
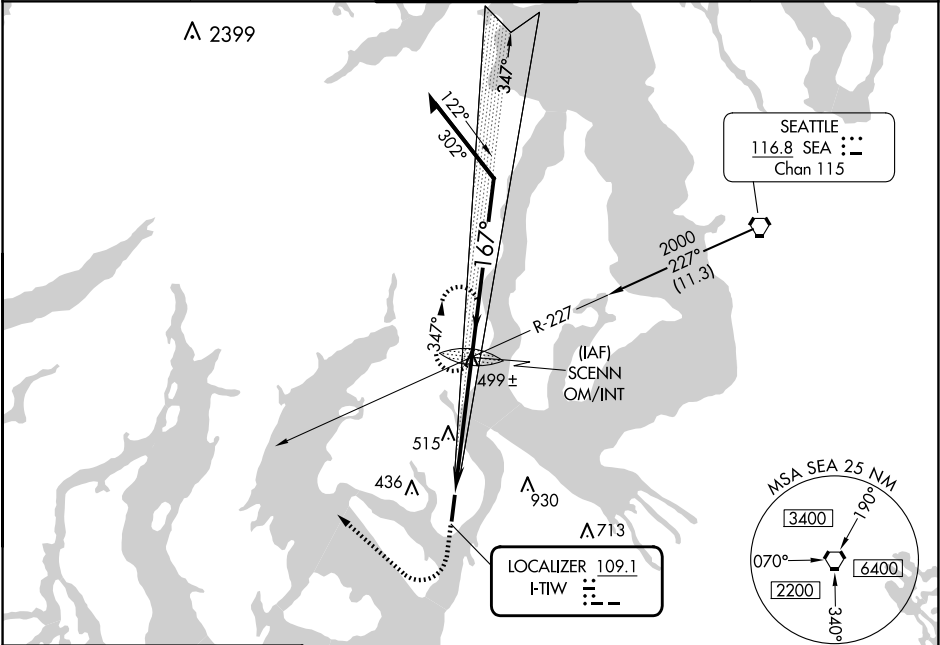
⚠ When control tower closed, obtain local altimeter setting on UNICOM, when not received, use McChord Fld altimeter setting minimums.

⚠ Circling not authorized east of Rwy 17-35.

MALSR

MISSED APPROACH: Climb to 1500, then climbing right turn to 2000 via heading 290° and SEA VORTAC R-227 to SCENN INT and hold.

ATIS 124.05	SEATTLE APP CON 120.1 290.9	TACOMA TOWER★ 118.5 (CTAF) 0 253.5	GND CON 121.8	UNICOM 122.95
-----------------------	---------------------------------------	--	-------------------------	-------------------------



1500	2000	SEA R-227	SCENN INT	SCENN OM/INT	Remain within 10 NM
1500	2000	hdg 290°		1964	347°
				167°	2000
				2000	GS 3.00°
				5 NM	TCH 52
CATEGORY	A	B	C	D	
S-ILS 17	494-1½ 200 (200-½)				
S-LOC 17	760-½	466 (500-½)	760-¾ 466 (500-¾)	760-1 466 (500-1)	
CIRCLING	760-1	465 (500-1)	820-1½ 525 (600-1½)	860-2 565 (600-2)	
MCCHORD FLD ALTIMETER SETTING MINIMUMS					
S-ILS 17	519-½ 225 (300-½)				
S-LOC 17	780-½	486 (500-½)	780-¾ 486 (500-¾)	780-1 486 (500-1)	
CIRCLING	800-1	505 (600-1)	860-1½ 565 (600-1½)	900-2 605 (700-2)	