

WAAS CH 86404 W31A	APP CRS 315°	Rwy Idg TDZE 238 Apt Elev 238
--	------------------------	---

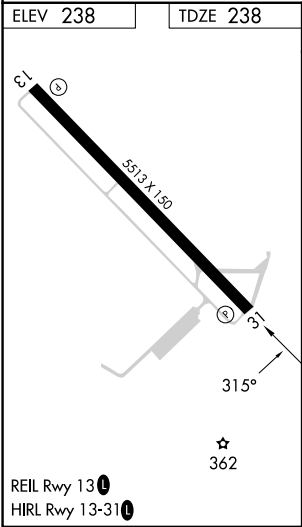
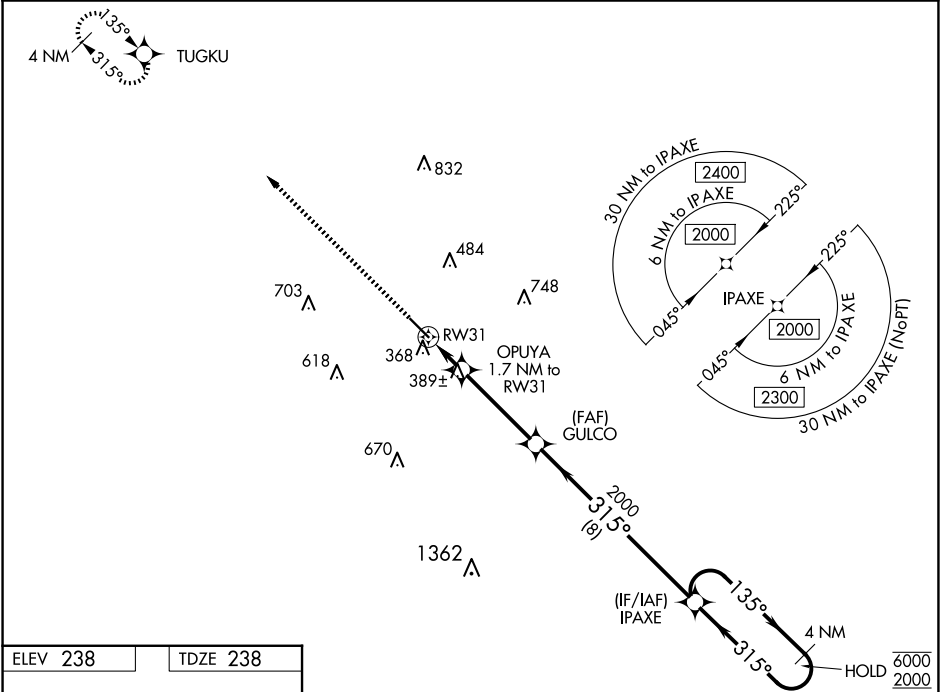
RNAV (GPS) RWY 31
HESLER/NOBLE FLD (LUL)

RNP APCH.

- ▼ Rwy 31 helicopter visibility reduction below ¾ SM NA.
- ▲ For uncompensated Baro-VNAV systems, LNAV/VNAV NA below -15°C or above 54°C.

MISSED APPROACH: Climb to 2000 direct TUGKU and hold.

AWOS-3PT 119.275	HOUSTON CENTER 126.8 327.8	UNICOM 123.05 (CTAF) 0
----------------------------	--------------------------------------	----------------------------------



2000	TUGKU	VGSI and RNAV glidepath not coincident (VGSI angle 3.00/TCH 40).			
*LNAV only.		OPUYA 1.7 NM to RW31	GULCO	IPAXE	4 NM Holding Pattern
RW31		*1.1 NM to RW31	2000	315°	135° → 6000 ← 315° 2000
1.1 NM		0.6 NM	3.7 NM	8 NM	GP 3.00° TCH 40
CATEGORY	A	B	C	D	
LPV DA	524-1		286 (300-1)		
LNAV/ VNAV DA	554-1		316 (400-1)		
LNAV MDA	640-1 402 (500-1)		640-1⅓ 402 (500-1⅓)		
CIRCLING	700-1 462 (500-1)	800-1 562 (600-1)	1040-2¼ 802 (900-2¼)	1060-2¾ 822 (900-2¾)	

SC-4, 10 JUL 2025 to 07 AUG 2025

SC-4, 10 JUL 2025 to 07 AUG 2025