

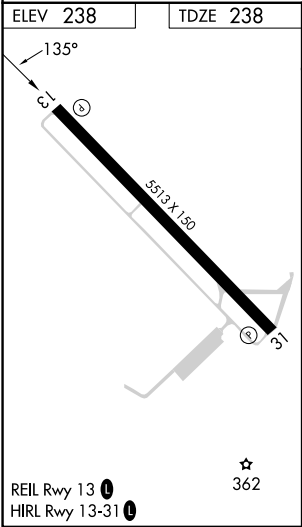
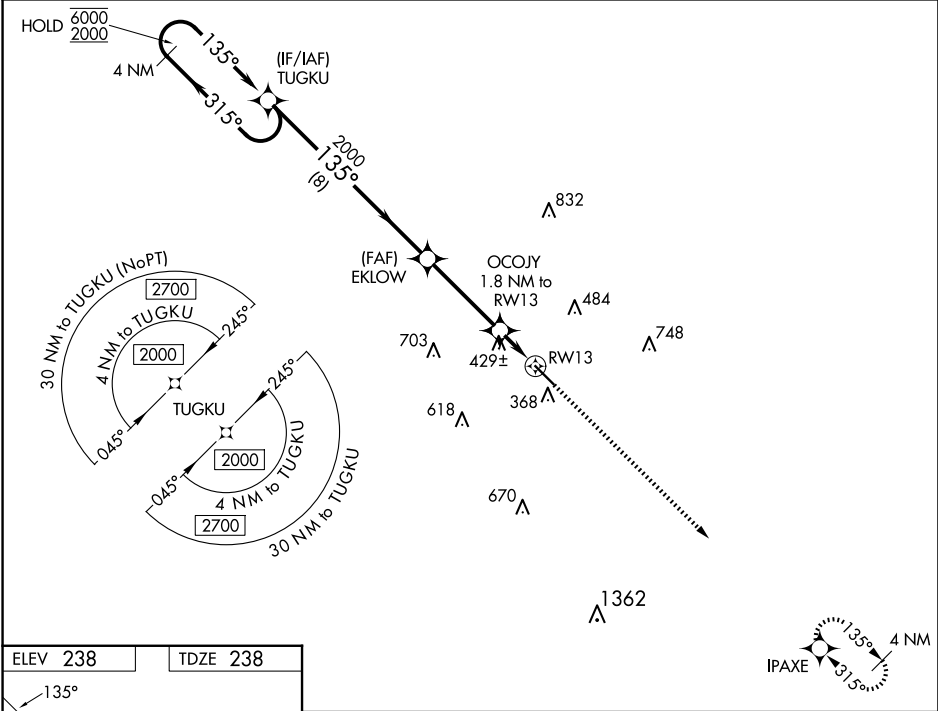
WAAS CH 45704 W13A	APP CRS 135°	Rwy Idg TDZE 238 Apt Elev 238
--	------------------------	---

RNAV (GPS) RWY 13

HESLER/NOBLE FLD (LUL)

RNP APCH.	MISSED APPROACH: Climb to 2000 direct IPAXE and hold.
▼ For uncompensated Baro-VNAV systems, LNAV/VNAV NA below -15°C or above 54°C.	

AWOS-3PT 119.275	HOUSTON CENTER 126.8 327.8	UNICOM 123.05 (CTAF) 0
----------------------------	--------------------------------------	----------------------------------



4 NM Holding Pattern		VGSI and RNAV glidepath not coincident (VGSI angle 3.00/TCH 40).		2000	IPAXE
TUGKU		EKLLOW		*LNAV only.	
6000 ← 315°		135° →		OCOJY 1.8 NM to RW13 *1.3 NM to RW13	
2000		2000		RW13	
GP 3.00° TCH 40		*840		RW13	
8 NM		3.6 NM		0.5 NM	
1.3 NM					
CATEGORY	A	B	C	D	
LPV DA	488-1		250 (300-1)		
LNAV/VNAV DA	759-1¾		521 (600-1¾)		
LNAV MDA	680-1	442 (500-1)	680-1¾	680-2	
			442 (500-1¾)	442 (500-2)	
CIRCLING	700-1	800-1	1040-2¼	1060-2¾	
	462 (500-1)	562 (600-1)	802 (900-2¼)	822 (900-2¾)	

SC-4, 10 JUL 2025 to 07 AUG 2025

SC-4, 10 JUL 2025 to 07 AUG 2025