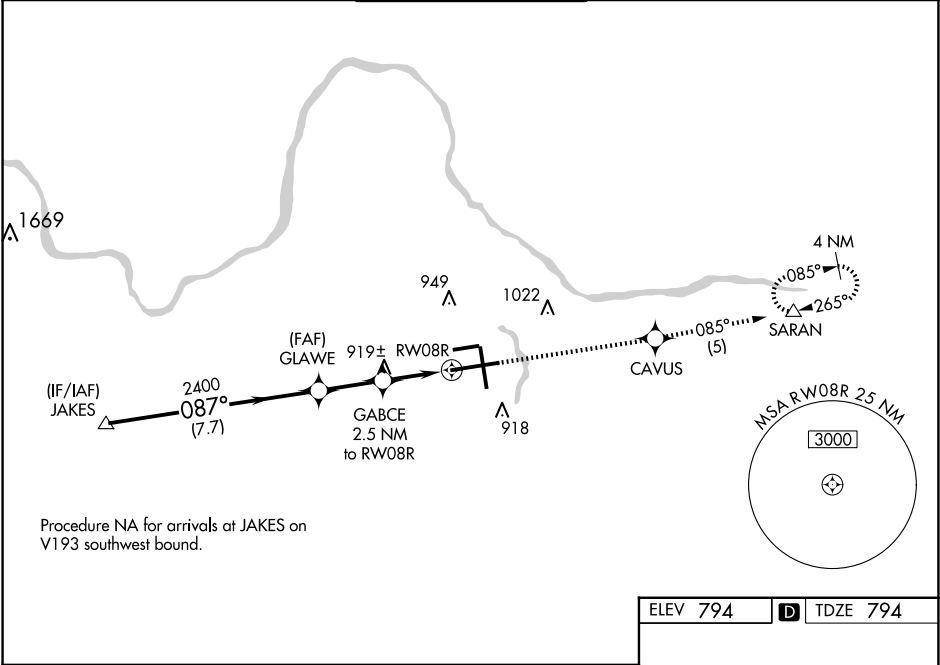


WAAS CH 40113 W08B	APP CRS 087°	Rwy Ldg TDZE 794 Apt Elev 794
--	------------------------	---

RNAV (GPS) RWY 8R

GERALD R FORD INTL (G.R.R.)

RNP APCH. <div>For uncompensated Baro-VNAV systems, LNAV/VNAV NA below -16°C or above 47°C. For inop ALS, increase LNAV Cat D visibility to RVR 6000. ** RVR 1800 authorized with use of FD or AP or HUD to DA.</div>			MALSR 	MISSED APPROACH: Climb to 2700 direct CAVUS and on track 085° to SARAN and hold.	
ATIS 118.725	GREAT LAKES APP CON ★ 128.4 257.6	GRAND RAPIDS TOWER★ 135.65 (CTAF) 339.8	GND CON 121.8	CLNC DEL 119.3	UNICOM 122.95



	JAKES	GLAWE	GABCE 2.5 NM to RW08R	RW08R	CAVUS	SARAN
	2700	2400	*1640			
	GP 3.00° TCH 51					
	7.7 NM	2.3 NM	1.4 NM	1.1 NM		
CATEGORY	A	B	C	D		
LPV DA **	994/24		200 (200-½)			
LNAV/VNAV DA	1297/50		503 (600-1)			
LNAV MDA	1180/24	386 (400-½)	1180/35 386 (400-¾)	1180/50 386 (400-1)		
CIRCLING	1260-1	466 (500-1)	1340-1½ 546 (600-1½)	1360-2 566 (600-2)		

