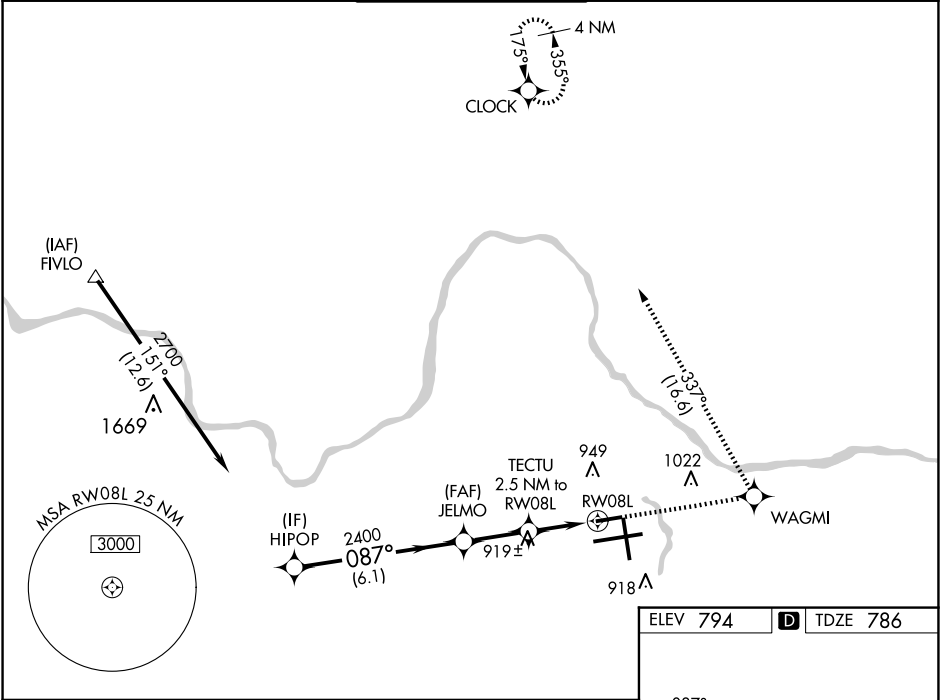


WAAS CH <b>40213</b> <b>W08A</b>	APP CRS <b>087°</b>	Rwy Ldg TDZE <b>786</b> Apt Elev <b>794</b>	<b>5001</b>
--	------------------------	---	-------------

RNAV (GPS) RWY 8L

GERALD R FORD INTL (G.R.R.)

RNP APCH.				MISSED APPROACH: Climb to 3000 direct WAGMI and left turn on track 337° to CLOCK and hold.	
Rwy 8L helicopter visibility reduction below ¾ SM NA. For uncompensated Baro-VNAV systems, LNAV/VNAV NA below -16°C or above 54°C.					
ATIS 118.725	GREAT LAKES APP CON ★ 128.4 257.6	GRAND RAPIDS TOWER★ 135.65 (CTAF) 0 339.8	GND CON 121.8	CLNC DEL 119.3	UNICOM 122.95



HIPOP		JELMO		TECTU		WAGMI		CLOCK					
2700		2400		2400		1022		337°					
GP 3.00°		087°		087°		087°		087°					
TCH 45		2400		2400		1022		337°					
6.1 NM		2.4 NM		1.4 NM		1.1 NM		1.1 NM					
CATEGORY	A	B	C	D									
LPV DA	1036-1				250 (300-1)								
LNAV/VNAV DA	1203-1½				417 (500-1½)								
LNAV MDA	1180-1		394 (400-1)		1180-1½		394 (400-1½)		1180-1¼				
CIRCLING	1260-1		466 (500-1)		1340-1½		546 (600-1½)		1360-2				