

WAAS CH 87112 W35A	APP CRS 357°	Rwy Ldg 8501 TDZE 790 Apt Elev 794
--	------------------------	---

RNAV (GPS) RWY 35

GERALD R FORD INTL (GRR)

RNP APCH - GPS.

RADAR required for procedure entry.

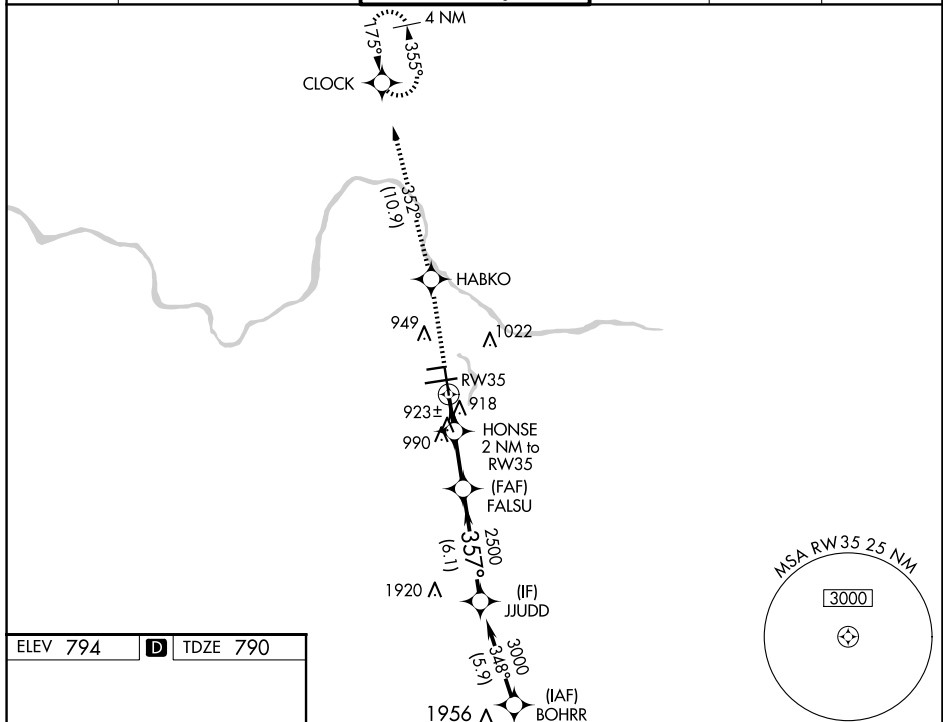
T For uncompensated Baro-VNAV systems, LNAV/VNAV NA below -16°C or above 54°C. For inop ALS, increase LNAV Cat D visibility to RVR 6000.
A * RVR 1800 authorized with use of FD or AP or HUD to DA.

MALSR

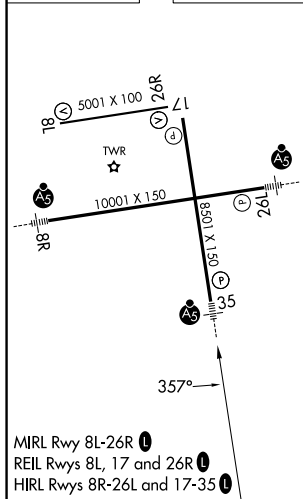





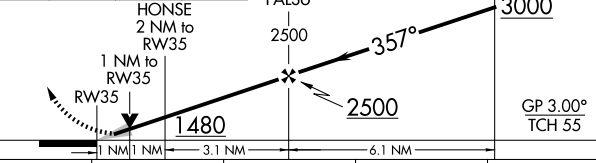
MISSED APPROACH: Climb to 3000 direct HABKO and on track 352° to CLOCK and hold.

ATIS 118.725	GREAT LAKES APP CON ★ 128.4 257.6	GRAND RAPIDS TOWER★ 135.65 (CTAF) 0 339.8	GND CON 121.8	CLNC DEL 119.3	UNICOM 122.95
-----------------	--------------------------------------	--	------------------	-------------------	------------------



ELEV 794	D	TDZE 790
----------	----------	----------



  		VGSI and RNAV glidepath not coincident (VGSI Angle 3.00/TCH 74).	
			
CATEGORY	A	B	C
LPV DA*	990/24 200 (200-½)		
INAV/ VNAV DA	1236/50 446 (500-1)		
INAV MDA	1180/24 390 (400-½)	1180/35 390 (400-¾)	1180/50 390 (400-1)
C CIRCLING	1260-1 466 (500-1)	1340-1½ 546 (600-1½)	1360-2 566 (600-2)