

WAAS CH 82502 W23A	APP CRS 231°	Rwy Idg 6512 TDZE 1224 Apt Elev 1232
--	------------------------	---

RNAV (GPS) RWY 23

BRAINERD LAKES RGNL (BRD)

BRAINERD LAKES RGNL (BRD)

RNP APCH - GPS.

V For uncompensated Baro-VNAV systems, LNAV/VNAV NA below -21°C or above 54°C. Baro-VNAV and VDP NA when using AIT altimeter setting. When local altimeter setting not received, use AIT altimeter setting and increase LPV DA to 1476 feet; increase LNAV/VNAV DA to 1553 feet; increase all MDAs 60 feet and LNAV visibility Cat C/D ¼ SM, and Circling visibility Cat C/D ¼ SM. For inop ALS when using AIT altimeter setting, increase LNAV/VNAV Cats C/D visibility to 1 ½ SM. For inop ALS, increase LNAV/VNAV all Cats visibility ¾ SM.

MALSR

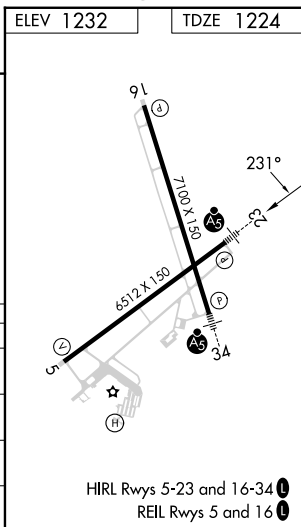
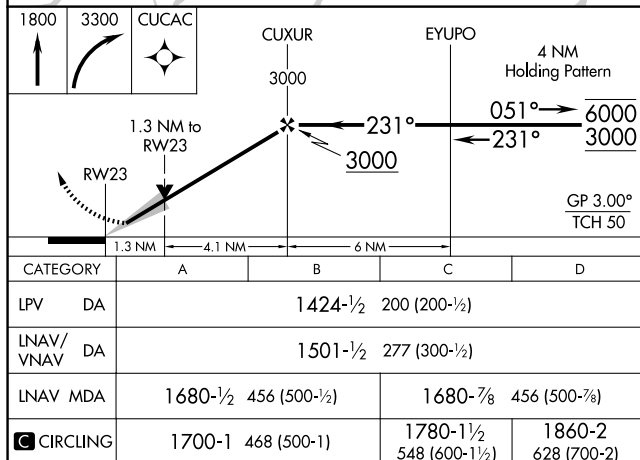
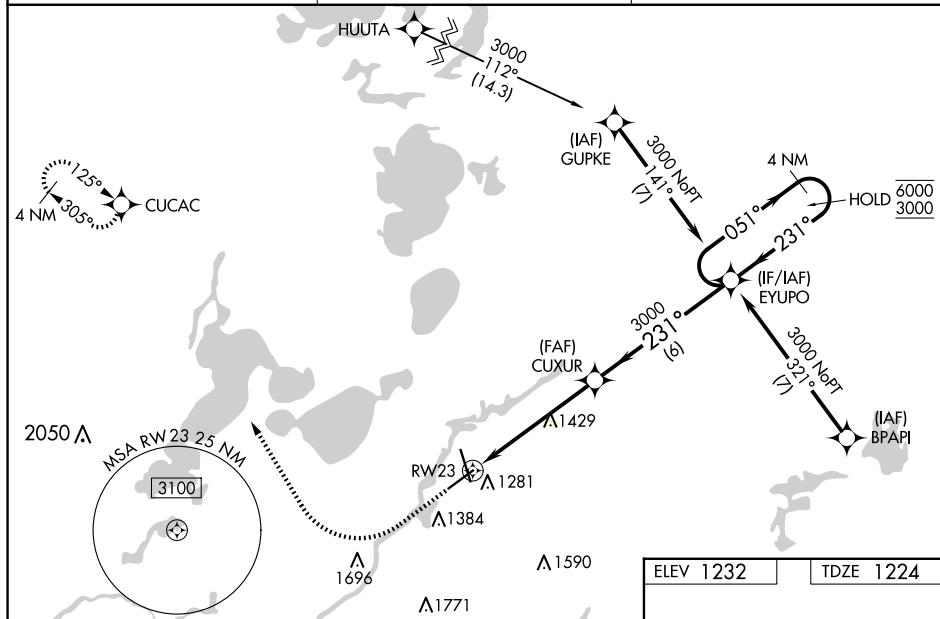


MISSED APPROACH: Climb to 1800 then climbing right turn to 3300 direct CUCAV and hold.

ASOS
126.775

MINNEAPOLIS CENTER
118.05 239.0

UNICOM
122.7 (CTAF) **L**



RNAV (GPS) RWY 23

HIRL Rwys 5-23 and 16-34 **L**
REIL Rwys 5 and 16 **L**