

LOC I-BRD <b>109.9</b>	APP CRS <b>231°</b>	Rwy Idg TDZE Apt Elev	<b>6512</b> <b>1224</b> <b>1232</b>
---------------------------	------------------------	-----------------------------	---

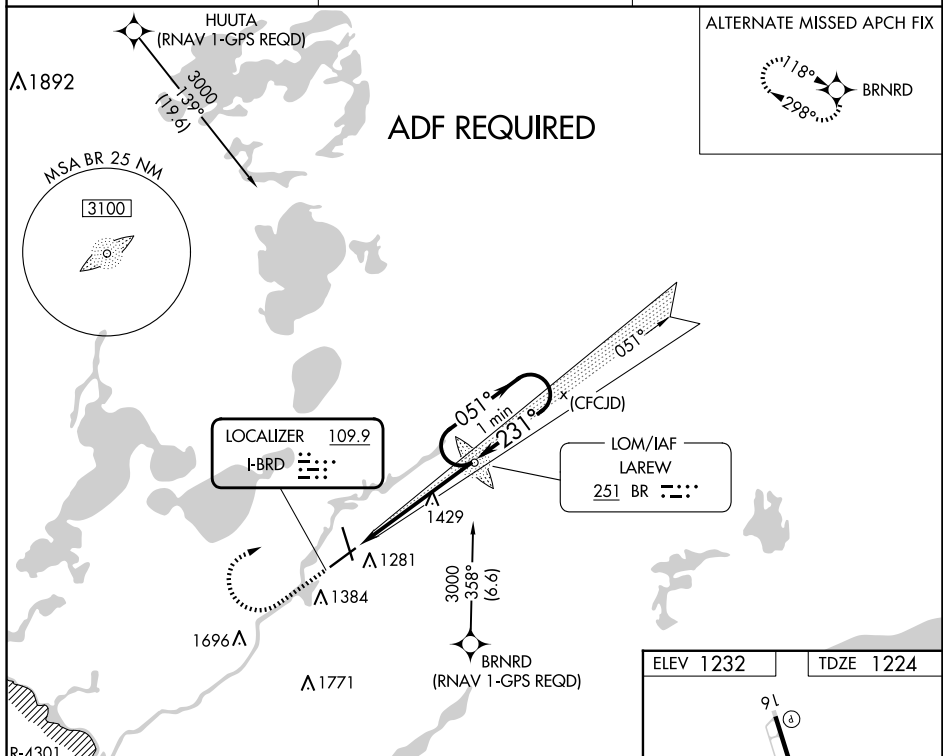
# ILS or LOC RWY 23


**A** ADF required. When local altimeter setting not received, use Aitkin altimeter setting and increase all DAs 52 feet and all MDAs 60 feet. Increase S-LOC Cat C visibility to 1 SM and Circling Cat D visibility to 2¼ SM.

MALSF

**MISSED APPROACH:** Climb to 2100 then climbing right turn to 3000 direct LAREW LOM and hold.

ASOS <b>126.775</b>	MINNEAPOLIS CENTER <b>118.05 239.0</b>	UNICOM <b>122.7 (CTAF) 0</b>
------------------------	---	---------------------------------



CATEGORY	A	B	C	D
S-ILS 23	1424-½ 200 (200-½)			
S-LOC 23	1680-½ 456 (500-½)		1680-⅞ 456 (500-⅞)	1680-1 456 (500-1)
 CIRCLING	1760-1 528 (600-1)		1760-1½ 528 (600-1½)	1860-2 628 (700-2)

ELEV 1232      TDZE 1224

HIRL Rwy 5-23 and 16-34 **(1)**  
 REIL Rwy 5 and 16 **(1)**

FAF to MAP 5.3 NM					
Knots	60	90	120	150	180
Min:Sec	5:18	3:32	2:39	2:07	1:46