

APP CRS
095°

Rwy Idg
TDZE
663

Apt Elev
663

RNAV (GPS) RWY 9
FREMONT (14G)

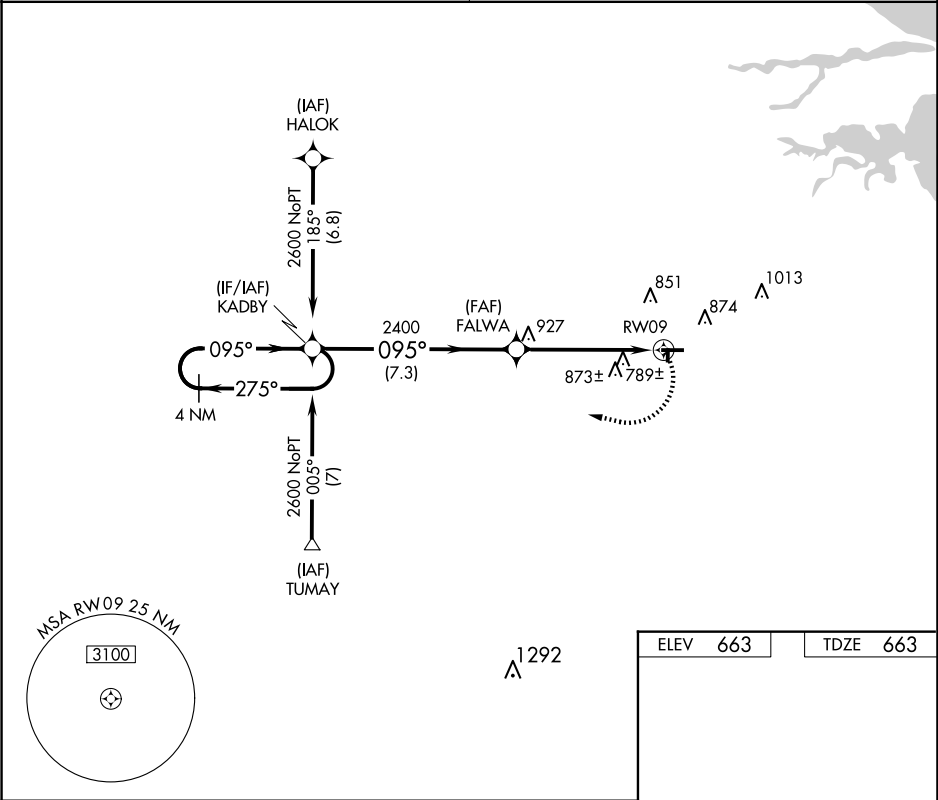
RNP APCH.

Procedure NA at night. Use Sandusky County Rgnl altimeter setting; when not received use Toledo Executive altimeter setting: increase all MDA 40 feet and LNAV Cat D and Circling Cat C and D visibility ¼ SM. Rwy 9 helicopter visibility reduction below 1 SM NA. Circling NA to Rwys 18-36.

MISSED APPROACH:
Climbing right turn to 2600
direct KADBY and hold.

TOLEDO APP CON
126.1 307.0

UNICOM
122.8 (CTAF) 0



4 NM Holding Pattern

KADBY

2600

275°

095°

FALWA

2400

3.05°

TCH 40

RWY 09

7.3 NM

5.3 NM

2600

KADBY

095°

81

4137 X 60

27

2238 X 130

36

CATEGORY	A	B	C	D
LNAV MDA	1080-1	417 (500-1)	1080-1¼	417 (500-1¼)
CIRCLING	1240-1	577 (600-1)	1240-1½ 577 (600-1½)	1380-2¼ 717 (800-2¼)

LURL Rwy 9-27 **0**★