

WAAS CH <b>56537</b> <b>W06A</b>	APP CRS <b>063°</b>	Rwy Idg TDZE <b>722</b> Apt Elev <b>722</b>
--	------------------------	---

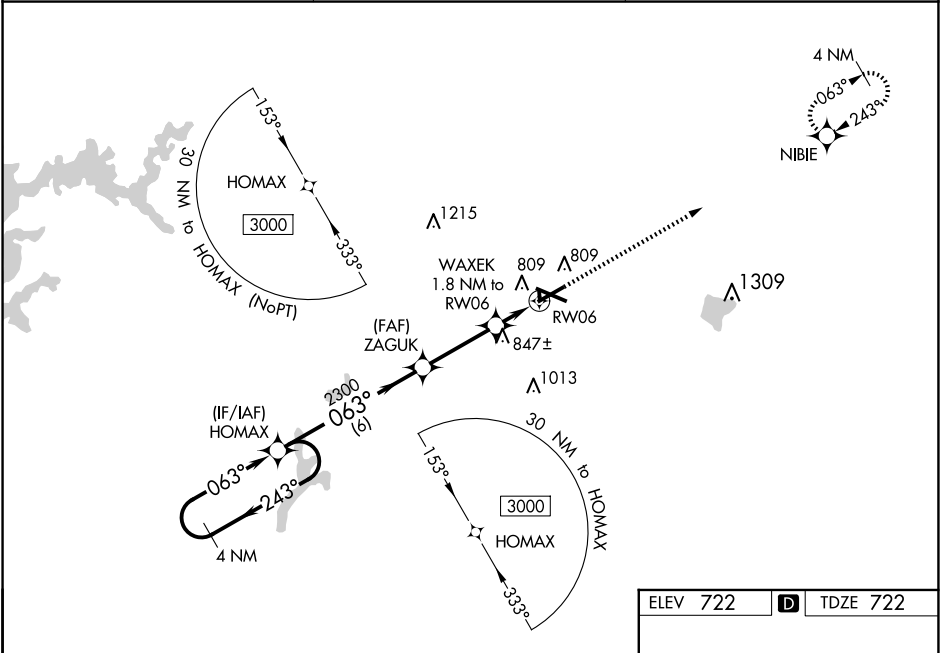
RNAV (GPS) RWY 6

COLES COUNTY MEML (MTO)

**⚠** DME/DME RNP-0.3 NA. When local altimeter setting not received, use Champaign/Urbana altimeter setting and increase all DA 82 feet, increase MDA 100 feet, increase LPV, LNAV/VNAV all Cats, LNAV Cats C/D and Circling Cat D visibility ¼ mile. Baro-VNAV and VDP NA when using Champaign/Urbana altimeter setting. Rwy 6 helicopter visibility reduction below ¼ SM NA. For uncompensated Baro-VNAV systems, LNAV/VNAV NA below -19°C (-2°F) or above 54°C (130°F). Circling NA to Rwys 18 and 36.

MISSED APPROACH:  
Climb to 3000 direct  
NIBIE and hold.

ASOS <b>118.475</b>	CHAMPAIGN APP CON ★ <b>132.85 290.225</b>	UNICOM <b>122.7 (CTAF) 0</b>
------------------------	--	---------------------------------



4 NM Holding Pattern

3000 ← 243°  
063° →

GP 3.00°  
TCH 41

HOMAX

ZAGUK

WAXEK 1.8 NM to RW06

\*1.1 NM to RW06

RW06

\*1320

3000

NIBIE

\*LNAV only.

CATEGORY	A	B	C	D
LPV DA	972-7⁄8		250 (300-7⁄8)	
LNAV/VNAV DA	1124-13⁄8		402 (500-13⁄8)	
LNAV MDA	1100-1	378 (400-1)	1100-1 1⁄8	378 (400-1 1⁄8)
<b>C</b> CIRCLING	1160-1 438 (500-1)	1180-1 458 (500-1)	1240-1 1⁄2 518 (600-1 1⁄2)	1380-2 658 (700-2)

ELEV 722

**D** TDZE 722

MIRL Rwy 6-24 **0**

HIRL Rwy 11-29 **0**

REIL Rwys 6, 11, and 24 **0**