

WAAS CH 93510 W29A	APP CRS 296°	Rwy Idg TDZE 718 Apt Elev 722
--	------------------------	---

RNAV (GPS) RWY 29

COLES COUNTY MEML (MTO)

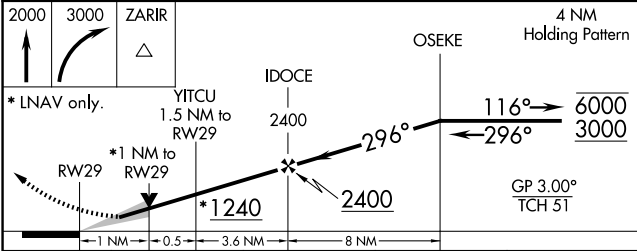
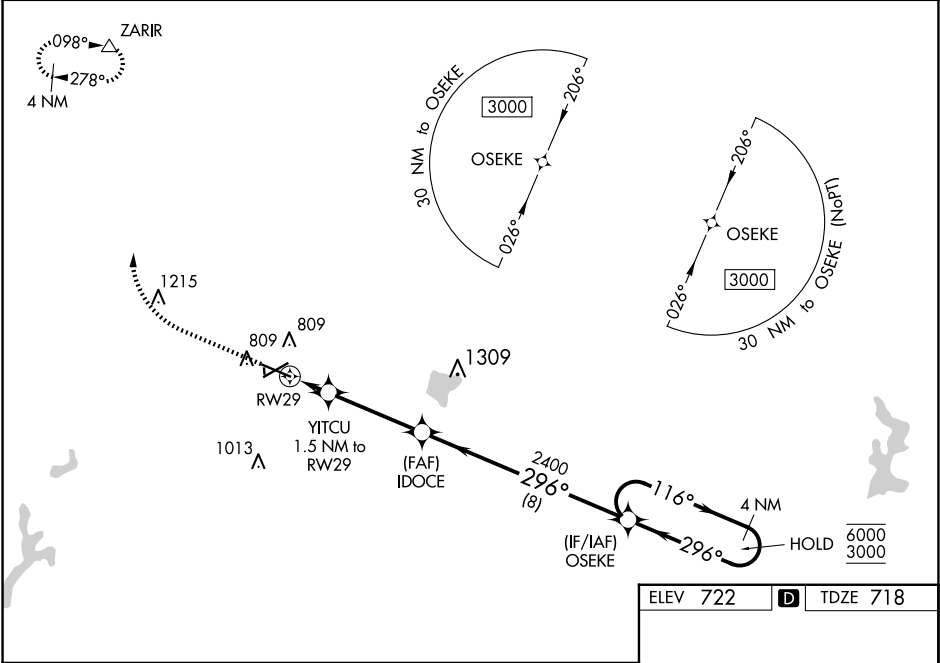
RNP APCH.

Circling NA to Rwys 18 and 36. For uncompensated Baro-VNAV systems, LNAV/VNAV NA below -19°C or above 54°C. For inop ALS, increase LNAV/VNAV all Cats visibility to ¾ SM and increase LNAV Cat C/D visibility to 1 SM.

MALSR

MISSED APPROACH:
Climb to 2000 then climbing right turn to 3000 direct ZARIR and hold.

ASOS 118.475	CHAMPAIGN APP CON ★ 132.85 290.225	UNICOM 122.7 (CTAF) 0
------------------------	--	---------------------------------



CATEGORY	A	B	C	D
LPV DA	918-½	200 (200-½)		
LNAV/VNAV DA	1014-½	296 (300-½)		
LNAV MDA	1080-½ 362 (400-½)	1080-⅝ 362 (400-⅝)		
CIRCLING	1160-1 438 (500-1)	1180-1 458 (500-1)	1240-1½ 518 (600-1½)	1380-2 658 (700-2)

ELEV 722 **D** TDZE 718

MIRL Rwy 6-24 0
HIRL Rwy 11-29 0
REIL Rwys 6, 11, and 24 0