

WAAS CH 56425 W29A	APP CRS 294°	Rwy Idg TDZE Apt Elev	4461 97 103
--	------------------------	-----------------------------	--

RNAV (GPS) RWY 29R
ZAMPERINI FLD (TOA)

⚠ For uncompensated Baro-VNAV systems, INAV/VNAV NA below 3°C (38°F) or above 54°C (130°F). Circling NA southwest of Rwy 11R/29L DME/DME RNP-0.3 NA.

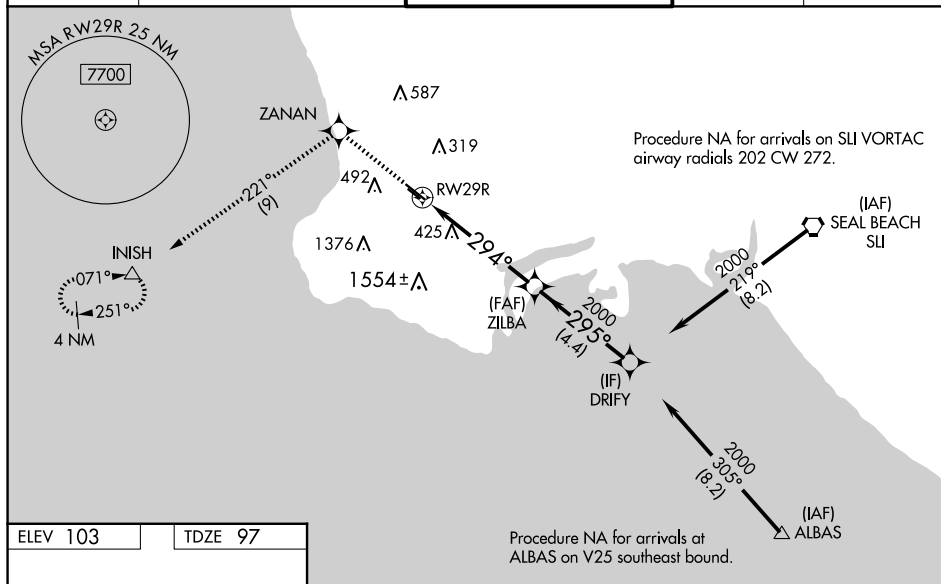
⚠ For inop ALS, increase LPV all Cats visibility to ½ SM. For inop ALS when using Los Angeles Intl altimeter setting, increase LPV all Cats visibility to ½ SM, INAV/VNAV all Cats visibility to 2 SM, and INAV Cat C visibility to 1½ SM. Baro-VNAV and VDP NA when using Los Angeles Intl altimeter setting. When local altimeter setting not received, except for operators with approved weather reporting service, use Los Angeles Intl setting: increase LPV DDA to 391 feet and INAV/VNAV DDA to 763 feet and all MDA 40 feet; increase INAV/VNAV all Cats visibility and INAV Cat C visibility ½ SM.

MALSR



MISSED APPROACH: (Do not exceed 185 KIAS until ZANAN) Climb to 3000 direct ZANAN and on track 221° to INISH and hold, continue climb-in-hold to 3000.

ATIS 125.6	SOCAL APP CON 124.3 363.2 (Rwys 11L, 11R) 127.2 269.6 (Rwys 29L, 29R)	TORRANCE TOWER* 133.075 257.8 (NORTH) 124.0 (CTAF) 0 257.8 (SOUTH)	GND CON 120.9	UNICOM 122.95
----------------------	---	---	-------------------------	-------------------------

[illegible]