

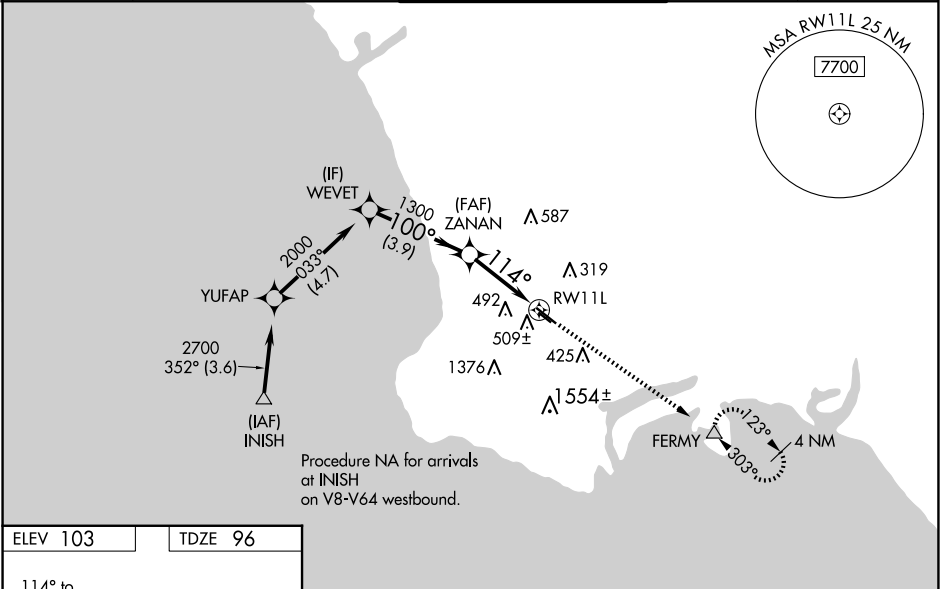
WAAS CH 61125 W11A	APP CRS 114°	Rwy Idg TDZE Apt Elev	4460 96 103
--	------------------------	-----------------------------	--

RNAV (GPS) RWY 11L
ZAMPERINI FLD (TOA)

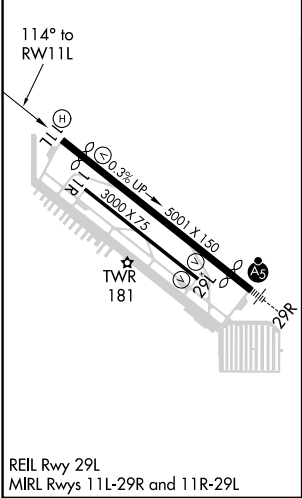
⚠ For uncompensated Baro-VNAV systems, LNAV/VNAV NA below 3°C (38°F) or above 54°C (130°F). Circling NA southwest of Rwy 11R-29L. Baro-VNAV and VDP NA when using Los Angeles Intl altimeter setting. DME/DME RNP-0.3 NA. When local altimeter setting not received, except for operators with approved weather reporting service, use Los Angeles Intl altimeter setting: increase LPV DA to 390 feet and LNAV/VNAV DA to 714 feet and all MDA 40 feet; increase LNAV/VNAV all Cats visibility, LNAV Cat C visibility and Circling Cat C visibility 1/8 SM. Rwy 11L helicopter visibility reduction below 3/4 SM NA.

MISSED APPROACH: Climb to 2700 direct FERMΥ and hold, continue climb-in-hold to 2700.

ATIS 125.6	SOCAL APP CON 124.3 363.2 (Rwys 11L, 11R) 127.2 269.6 (Rwys 29L, 29R)	TORRANCE TOWER* 133.075 257.8 (NORTH) 124.0 (CTAF) 0 257.8 (SOUTH)	GND CON 120.9	UNICOM 122.95
----------------------	---	---	-------------------------	-------------------------



ELEV 103	TDZE 96
----------	---------



VGSI and RNAV glidepath not coincident (VGSI Angle 3.50/TCH 10).				2700	FERMΥ
				↑	△
				*LNAV only.	
WEVET				ZANAN	
2000				1300	
GP 3.43°				114°	
TCH 59				*1.5 NM to RWY 11L	
				RWY 11L	
				3.9 NM	
				1.7 NM	
				1.5 NM	
CATEGORY	A	B	C	D	
LPV DA	366-7/8 270 (300-7/8)			NA	
LNAV/VNAV DA	690-13/4 594 (600-13/4)			NA	
LNAV MDA	640-1	544 (600-1)	640-15/8 544 (600-15/8)	NA	
CIRCLING	640-1 537 (600-1)	680-1 577 (600-1)	680-15/8 577 (600-15/8)	NA	