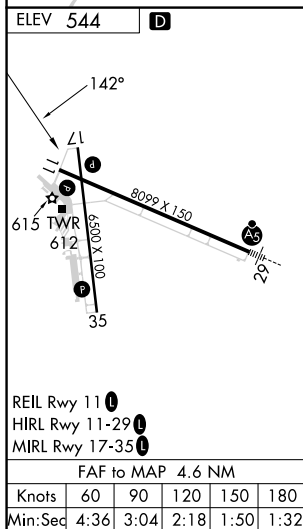
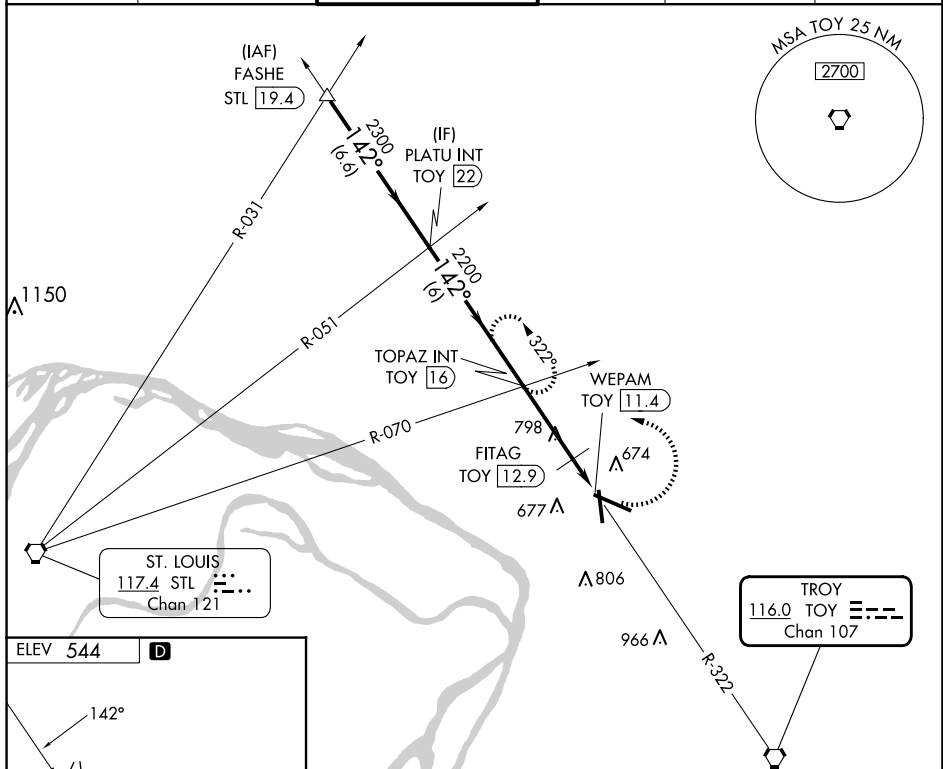


24305

VOR-A
ST LOUIS RGNL (ALN)

MISSED APPROACH: Climbing left turn to 2200
via TOY R-322 to TOPAZ INT/TOY 16 DME
and hold.

ATIS 128.0	ST LOUIS APP CON 124.2 353.9	REGIONAL TOWER* 126.0 (CTAF) 0 239.0	GND CON 120.2	CLNC DEL 120.2 (when tower closed)	UNICOM 122.95
----------------------	--	--	-------------------------	---	-------------------------



The diagram illustrates the FITAG FIX procedure. It shows a flight path starting at 2700 feet, turning NA to 2300 feet, then to 2200 feet, and finally to 1200-2 feet. The path is divided into segments with distances of 6.6 NM, 6 NM, 3.2 NM, and 1.4 NM. Altitudes are marked at 2700, 2300, 2200, 1100, 1160, and 1200-2. The diagram also includes labels for various systems and procedures, such as STIL, PLATU INT TOY, TOPAZ INT TOY, FITAG, WEPAM, and TOPAZ INT.

ST LOUIS REGNI (ALN)

38°53'N-90°03'W

VOR-A

EC-3, 10 JUL 2025 to 07 AUG 2025

EC-3, 10 JUL 2025 to 07 AUG 2025