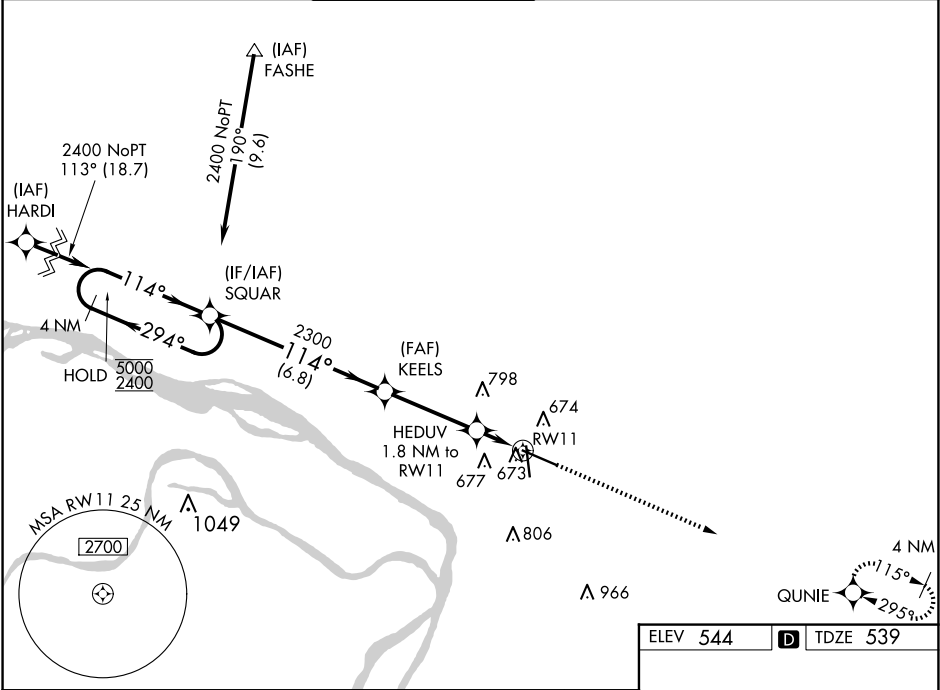


WAAS CH 90417 W11A	APP CRS 114°	Rwy Idg TDZE 539 Apt Elev 544
--	------------------------	---

RNAV (GPS) RWY 11

ST LOUIS RGNL (ALN)

RNP APCH.				MISSED APPROACH: Climb to 2100 direct QUNIE and hold.	
▼ Rwy 11 helicopter visibility reduction below ¾ SM NA. ▲ For uncompensated Baro-VNAV systems, LNAV/VNAV NA below -16°C or above 54°C.					
ATIS 128.0	ST LOUIS APP CON 124.2 353.9	REGIONAL TOWER★ 126.0(CTAF) 0 239.0	GND CON 120.2	CLNC DEL 120.2 (when tower closed)	UNICOM 122.95



4 NM Holding Pattern		SQUAR	KEELS 2300	HEDUV 1.8 NM to RW11	2100 ↑	QUNIE ✱
5000 ← 294° 2400 → 114°			2300	*1.3 NM to RW11	*LNAV only.	
GP 3.00° TCH 46		6.8 NM		3.6 NM	0.5 NM	1.3
		*1140			RW11	
CATEGORY	A	B	C	D		
LPV DA	794-7⁄8		255 (300-⁄8)			
LNAV/ VNAV DA	881-1 1⁄8		342 (400-1 1⁄8)			
LNAV MDA	980-1	441 (500-1)	980-1 3⁄8		441 (500-1 3⁄8)	
CIRCLING	1000-1	456 (500-1)	1160-1 3⁄4 616 (700-1 3⁄4)		1200-2 656 (700-2)	

