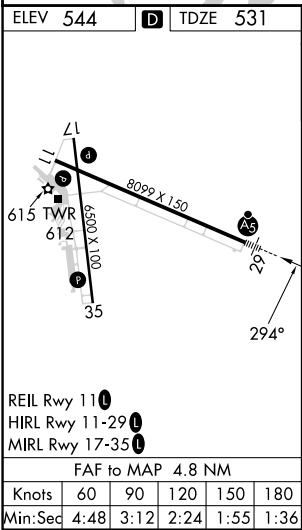
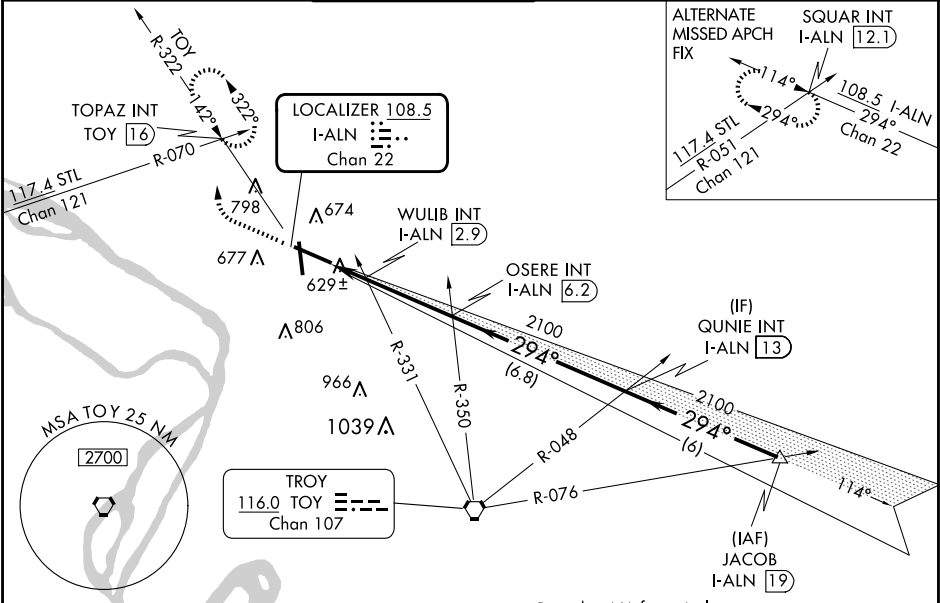


LOC/DME I-ALN	APP CRS	Rwy Idg	8099
108.5	294°	TDZE	531
Chan 22		Apt Elev	544

ILS or LOC RWY 29

ST LOUIS RGNL (ALN)

<div><div><div><div></div><div></div></div><div><div></div><div></div></div></div><div>For inop ALS, increase WULIB fix minimums S-LOC 29 Cats C/D visibility to 1 SM.</div></div>			<div><div>MALSR</div><div><div><div></div><div></div><div></div><div></div><div></div><div></div></div><div><div>A5</div></div></div></div>	MISSED APPROACH: Climb to 1000 then climbing right turn to 2200 on heading 310° and on TOY VORTAC R-322 to TOPAZ INT/TOY 16 DME and hold.	
ATIS 128.0	ST LOUIS APP CON 124.2 353.9	REGIONAL TOWER ★ 126.0(CTAF) 0 239.0	GND CON 120.2	CLNC DEL 120.2 (when tower closed)	UNICOM 122.95



Procedure NA for arrivals at JACOB on V12 northeast bound.

1000	2200	TOY R-322	TOPAZ INT	*LOC only.			
		hdg 310°			OSERE INT I-ALN 6.2	QUNIE INT I-ALN 13	JACOB I-ALN 19
					2100	2100	2100
					2100	2100	GS 3.00° TCH 55
					1.4 NM	3.3 NM	6.8 NM
CATEGORY		A	B	C	D		
S-ILS 29		731-1/2	200 (200-1/2)				
S-LOC 29		980-1/2	449 (500-1/2)		980-7/8	449 (500-7/8)	
CIRCLING		1000-1	456 (500-1)		1160-13/4	616 (700-13/4)	1200-2
							656 (700-2)
					WULIB FIX MINIMUMS (DUAL VOR RECEIVERS OR DME REQUIRED)		
S-LOC 29		880-1/2	349 (400-1/2)		880-5/8	349 (400-5/8)	
CIRCLING		1000-1	456 (500-1)		1160-13/4	616 (700-13/4)	1200-2
							656 (700-2)