

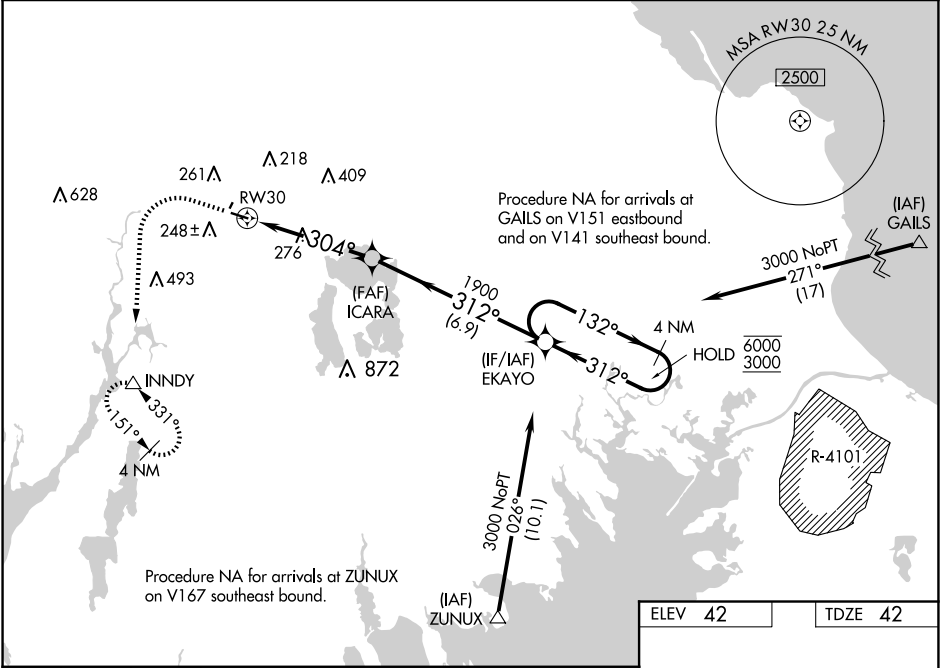
WAAS CH 58139 W30A	APP CRS 304°	Rwy Idg 3499 TDZE 42 Apt Elev 42
--	------------------------	---

RNAV (GPS) RWY 30

TAUNTON MUNI/KING FLD (TAN)

RNP APCH.	MISSED APPROACH: (Do not exceed 210K until INNDY) Climb to 600 then climbing left turn to 3000 direct INNDY and hold. Continue climb in hold to 3000.
<div><div></div><div>Circling NA to Rws 4 and 22. Rwy 30 helicopter visibility reduction below 1 SM NA. For uncompensated Baro-VNAV systems, LNAV/VNAV NA below -23°C or above 46°C.</div></div>	

ASOS 132.675	PROVIDENCE APP CON ★ 128.7 269.525	UNICOM 122.7 (CTAF) 0
------------------------	--	---------------------------------



600	3000	INNDY	VGSI and RNAV glidepath not coincident (VGSI Angle 4.00/TCH 45).	EKAJO	4 NM Holding Pattern
ICARA	1900	312°	132°	6000	3000
RW30	304°	1900	GP 3.60° TCH 59		
4.7 NM	6.9 NM				
CATEGORY	A	B	C	D	
LPV DA	388-1	346 (400-1)		NA	
LNAV/VNAV DA	526-1 $\frac{3}{8}$	484 (500-1 $\frac{3}{8}$)		NA	
LNAV MDA	600-1	558 (600-1)	600-1 $\frac{5}{8}$ 558 (600-1 $\frac{5}{8}$)	NA	
CIRCLING	600-1	558 (600-1)	660-1 $\frac{3}{4}$ 618 (700-1 $\frac{3}{4}$)	NA	

