

WAAS CH 65917 W25A	APP CRS 253°	Rwy Idg TDZE 5700 1389 Apt Elev 1391
----------------------------------------	------------------------	--------------------------------------------------------------------

RNAV (GPS) RWY 25

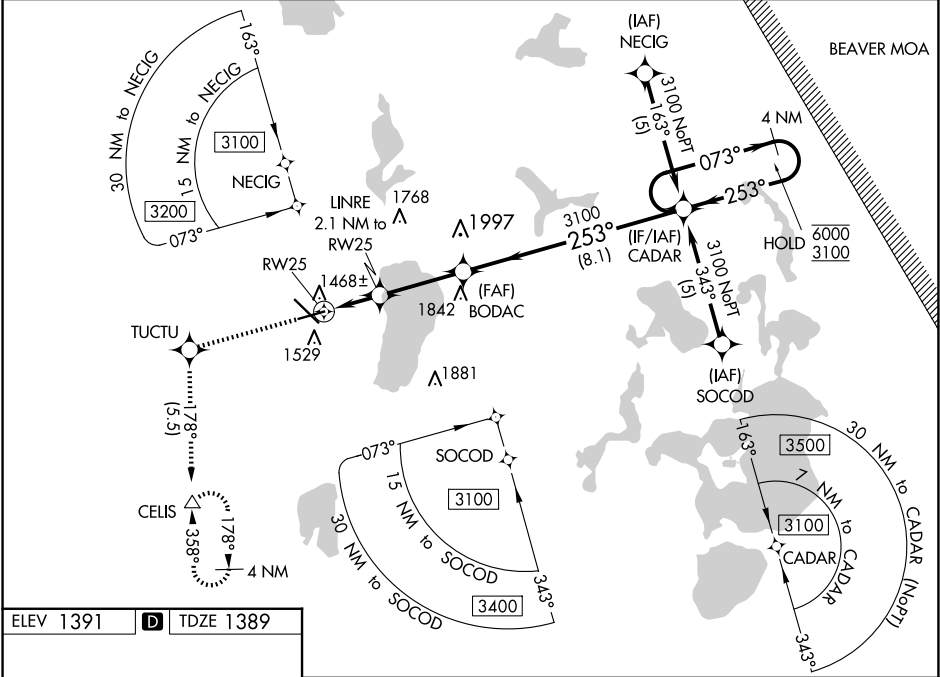
BEMIDJI RGNL (BJI)

RNP APCH.

For uncompensated Baro-VNAV systems, LNAV/VNAV NA below -17°C or above 46°C.

MISSED APPROACH:
Climb to 3400 direct
TUCTU and on track
178° to CELUS and hold.

AWOS-3 119.275	MINNEAPOLIS CENTER 134.75 251.1	UNICOM 122.8 (CTAF) 0
--------------------------	-------------------------------------------	---------------------------------



ELEV 1391 **D** TDZE 1389

Diagram showing the layout of runways and taxiways. Key features include:

- Runways:** RWY 13-31, RWY 7-25.
- Dimensions:** 2004 x 150, 5700 x 150.
- Obstacles:** A1443, A1529, A1842, A1768.
- Angles:** 253° to RW25, 178° to CELUS.

HIRL Rwy 13-31 **0**
MIRL Rwy 7-25 **0**
REIL Rwy 7 and 25 **0**

3400	TUCTU	tr 178°	CELUS	BODAC	CADAR	4 NM Holding Pattern
*LNAV only.	LINRE 2.1 NM to RW25	*1.3 NM to RW25	2080*	3100	253°	073° 6000 3100
1.3 NM	0.8	3.1 NM	8.1 NM			GP 3.00° TCH 46
CATEGORY	A	B	C	D		
LPV DA		1589-3/4	200 (200-3/4)			
LNAV/VNAV DA		1752-1/4	363 (400-1/4)			
LNAV MDA	1840-1	451 (500-1)	1840-1 3/8 451 (500-1 3/8)	1840-1 1/2 451 (500-1 1/2)		
C CIRCLING	1840-1 449 (500-1)	1860-1 469 (500-1)	1860-1 1/2 469 (500-1 1/2)	1960-2 569 (600-2)		

NC-1, 10 JUL 2025 to 07 AUG 2025

NC-1, 10 JUL 2025 to 07 AUG 2025