

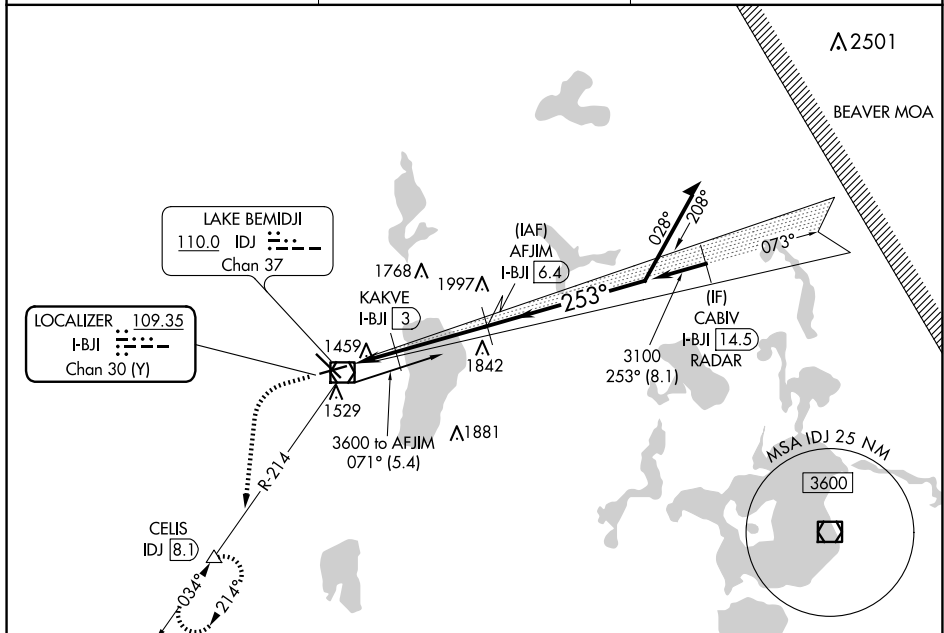
23110

ILS or LOC RWY 25
BEMIDJI RGNL (BJI)

MISSED APPROACH: Climb to 2300 then climbing left turn to 3400 on heading 185° and IDJ VOR/DME R-214 to CELIS/IDJ VOR/DME 8.1 DME and hold, continue climb-in-hold to 3400.

T
A NA

AWOS-3 119.275	MINNEAPOLIS CENTER 134.75 251.1	UNICOM 122.8 (CTAF) 0
--------------------------	---	---------------------------------



NC-1, 10 JUL 2025 to 07 AUG 2025

AFJIM ILS

Use I-BJL DME when on the localizer course.

Remain within 10 NM

LOC only

AFJIM ILS

LOC only

CATEGORY	A	B	C	D
S-ILS 25	1589-3/4	200 (200-3/4)		
S-LOC 25	1720-1	331 (400-1)		

CIRCLING	1840-1 449 (500-1)	1860-1 469 (500-1)	1860-1 1/2 469 (500-1 1/2)	1960-2 569 (600-2)
----------	-----------------------	-----------------------	-------------------------------	-----------------------

BEMIDJI RGNL (BJI)
ILS or LOC RWY 25