

APP CRS  
**235°**

Rwy Ldg  
**2822**

TDZE  
**85**

Apt Elev  
**85**

RNAV (GPS) RWY 24

SHANNON (EZF)

RNP APCH.

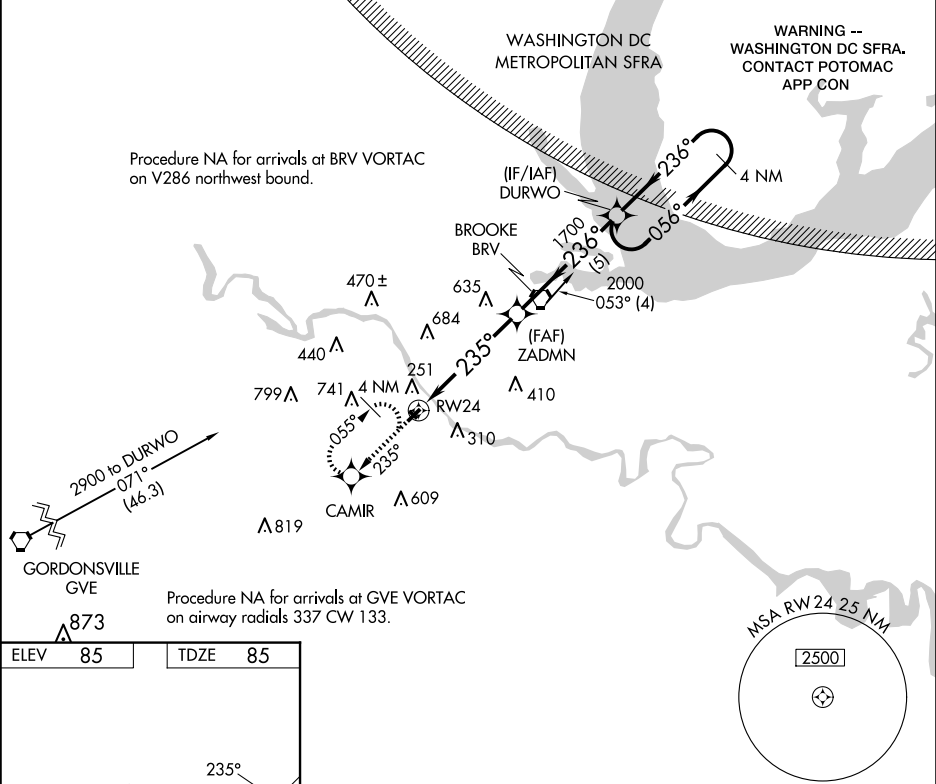
▼

▲

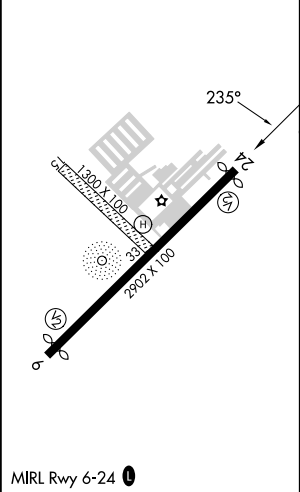
Helicopter visibility reduction below 1 SM NA. When local altimeter setting not received use Stafford altimeter setting and increase all MDA 40 feet. Procedure NA at night. Circling NA to Rwy 15-33.

MISSED APPROACH: Climb to 2000 direct CAMIR and hold.

AWOS-3 <b>128.125</b>	QUANTICO APP CON ★ <b>127.05 290.375</b>	GCO <b>135.075</b>	UNICOM <b>122.8 (CTAF) 0</b>
--------------------------	---	-----------------------	---------------------------------



ELEV 85	TDZE 85
---------	---------



2000	CAMIR	Visual Segment - Obstacles.		DURWO	4 NM Holding Pattern
		ZADMN	1700	056°	2000
		RW24	235°	236°	236°
		5 NM	5 NM		
CATEGORY	A	B	C	D	
LNAV MDA	1100-3	1015 (1100-3)		NA	
CIRCLING	1100-3	1015 (1100-3)		NA	