

WAAS CH 50440 W33A	APP CRS 325°	Rwy Idg 5001 TDZE 41 Apt Elev 47
--	------------------------	---

RNAV (GPS) RWY 33R

WRIGHT AAF (FORT STEWART)/MIDCOAST RGNL (LHW)

RNP APCH.

▼ Circling to Rwy 6R, 24L, 15R, 33L, 6L, 24R NA at night. For uncompensated Baro-VNAV systems, LNAV/VNAV NA below -6°C or above 54°C. When local altimeter setting not received, use Savannah/Hilton Head Intl altimeter setting: increase LPV DA to 346 feet, LNAV/VNAV DA to 379 feet and all visibilities $\frac{1}{8}$ mile; increase all MDAs 60 feet and LNAV and Circling Cats C and D visibility $\frac{1}{4}$ mile. Baro-VNAV NA when using Savannah Hilton Head Intl altimeter. Circling NA northeast of Rwy 15L-33R. Procedure NA when R-3005C/D or R-3007C is active and LHW Tower is closed.

MISSED APPROACH: Climb to 500 then climbing right turn to 4000 direct HARPS and hold.

ATIS ★ 118.475	SAVANNAH APP CON★ 120.4 353.775	WRIGHT TOWER ★ 126.25 (CTAF) 0 269.275	GND CON 121.7 273.575
-------------------	------------------------------------	---	--------------------------

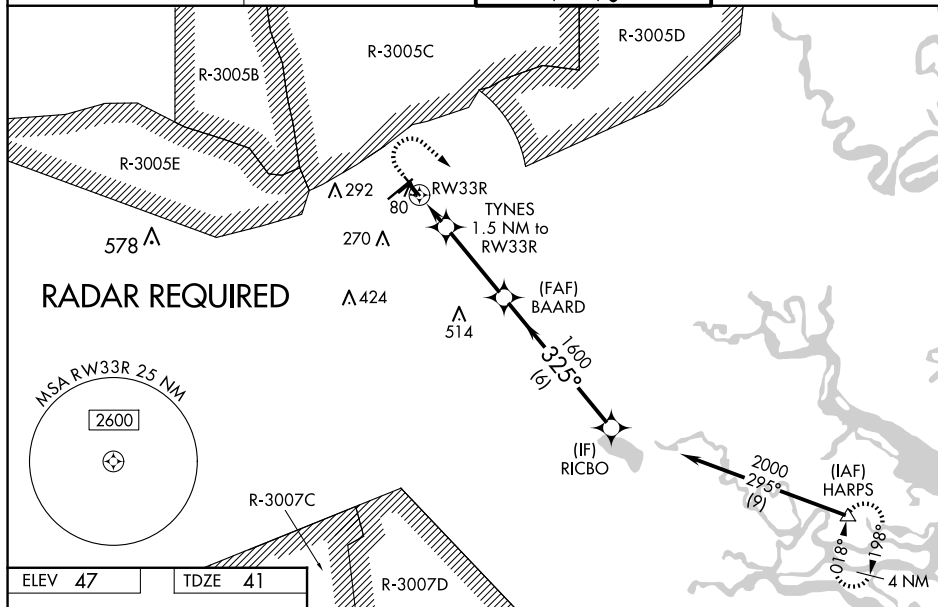


Diagram illustrating the HIRL system for RWY 33R. The diagram shows a 325° heading and a 6000 x 100 ft segment. A TWR 161 is located near the runway. The diagram also shows a 325° heading and a 6000 x 100 ft segment.

CATEGORY	A	B	C	D
LPV DA	291-1	250 (300-1)		
LNAV/VNAV DA	324-1	283 (300-1)		
LNAV MDA	420-1	379 (400-1)		

CIRCLING

560-1 513 (600-1)	620-1 573 (600-1)	680-1 ³ / ₄ 633 (700-1 ³ / ₄)	680-2 633 (700-2)
----------------------	----------------------	---	----------------------

FORT STEWART (HINESVILLE), GEORGIA
Amdt 1B 11AUG22

WRIGHT AAF (FORT STEWART)/MIDCOAST RGNL (LHW)
31°53'N-81°34'W **BNAY (GPS) BWY 33B**

RNAV (GPS) RWY 33R

SE-4, 10 JUL 2025 to 07 AUG 2025

SE-4, 10 JUL 2025 to 07 AUG 2025