

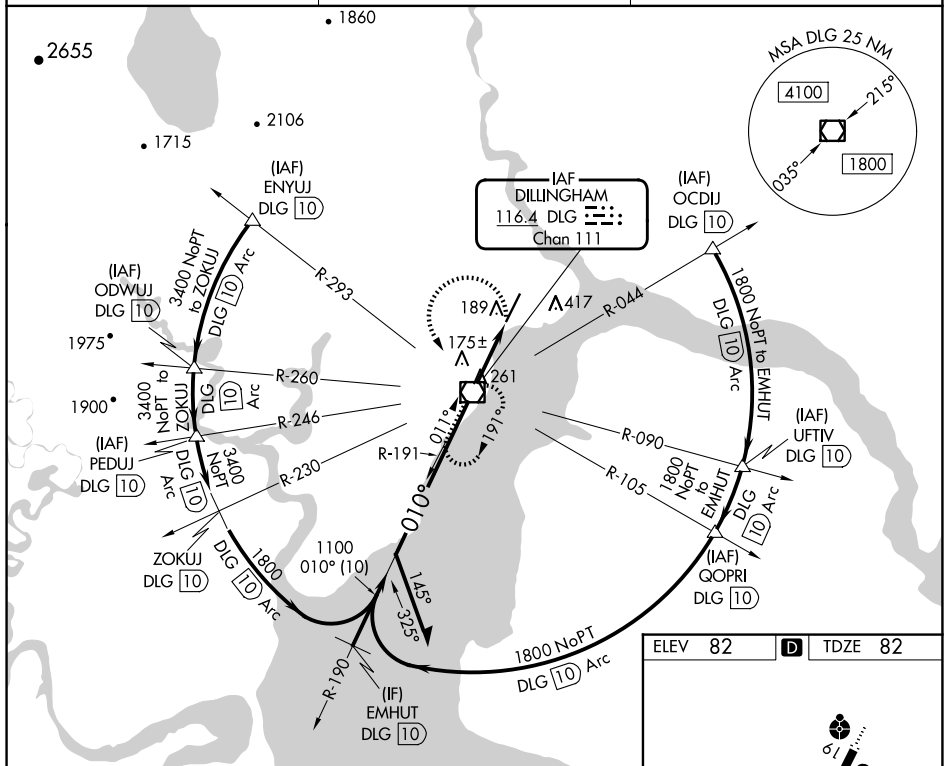
VOR/DME DLG	APP CRS	Rwy Idg	<b>6400</b>
<u><b>116.4</b></u>		TDZE	<b>82</b>
Chan <b>111</b>	<b>010°</b>	Apt Elev	<b>82</b>

VOR RWY 1  
DILLINGHAM (DLG)(PADL)

**T** Circling NA east of Rwy 1-19. Rwy 1 helicopter visibility  
**A** reduction below  $\frac{3}{4}$  SM NA. VDP NA when using Manokotak  
altimeter setting. When local altimeter setting not received, use  
Manokotak altimeter setting and increase all MDAs 40 feet.

**MISSED APPROACH:** Climbing left turn to 2000 direct  
DLG VOR/DME and hold, continue climb-in-hold to 2000.

AFIS <b>125.0</b>	ANCHORAGE CENTER <b>132.75 282.35</b>	DILLINGHAM RADIO <b>123.6 (CTAF) L</b>
----------------------	--	---

[illegible]