

WAAS CH <b>82025</b> <b>W01A</b>	APP CRS <b>015°</b>	Rwy Idg <b>6400</b> TDZE <b>82</b> Apt Elev <b>82</b>
--	------------------------	---

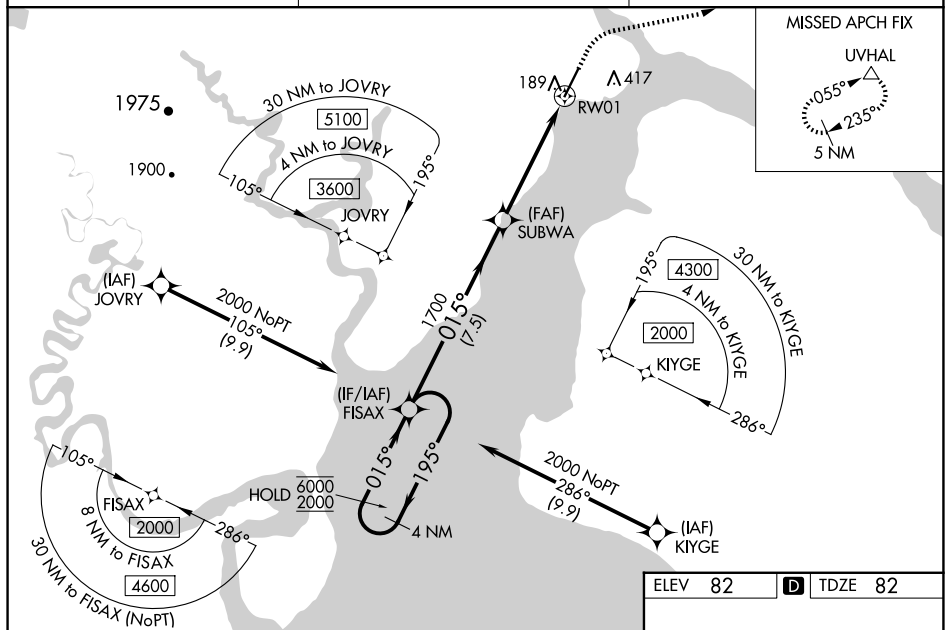
RNAV (GPS) Z RWY 1  
DILLINGHAM (DLG)(PADL)

RNP APCH - GPS.

**▼** Circling NA east of Rwy 1-19. For uncompensated Baro-VNAV systems, procedure NA below -20°C or above 54°C. Rwy 1 helicopter visibility reduction below  $\frac{3}{4}$  SM. NA. Baro-VNAV and VDP NA when using Manokotak altimeter setting. When local altimeter setting not received, use Manokotak altimeter setting and increase LPV DA to 367 feet; increase LNAV/VNAV DA to 486 feet and all visibilities  $\frac{1}{8}$  SM. Increase all MDAs 40 feet and LNAV visibility Cat/C  $\frac{1}{2}$  SM.

**MISSED APPROACH:** Climb to 600 then climbing right turn to 2000 direct UVHAL and hold.

AFIS <b>125.0</b>	ANCHORAGE CENTER <b>132.75 282.35</b>	DILLINGHAM RADIO <b>123.6 (CTAF) 0</b>
----------------------	--	---



4 NM Holding Pattern 6000 ← 195° 2000 → 015°		FISAX SUBWA 1700 1700		600 1700 1.4 NM to RW01	2000 1700 1.4 NM to RW01	UVHAL △
GP 3.00° TCH 45		7.5 NM 3.5 NM 1.4 NM		RW01		
CATEGORY	A	B	C	D		
LPV DA	332-1 250 (300-1)					
LNAV/VNAV DA	451-1 369 (400-1)					
LNAV MDA	580-1 498 (500-1)			580-1 498 (500-1)		
CIRCLING	580-1 498 (500-1)			700-1 618 (700-1)		700-2 618 (700-2)

