

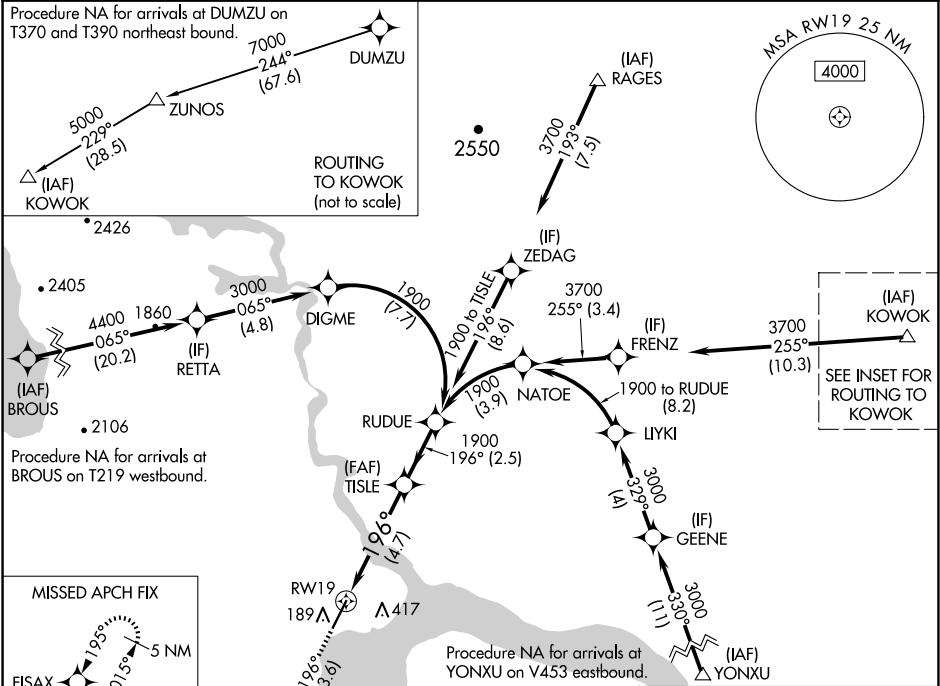
APP CRS	Rwy Idg	6400
196°	TDZE	81
	Apt Elev	82

RNAV (RNP) Y RWY 19

DILLINGHAM (DLG)(PADL)

RNP AR APCH - GPS.	ODALS	MISSED APPROACH: Climb to 5000 on track 196° to FISAX and hold, continue climb-in-hold to 5000.
▼ For uncompensated Baro-VNAV systems, procedure NA below -25°C or above 54°C. Inop table does not apply to RNP 0.10 and RNP 0.30. For inop ALS, increase RNP 0.20 Cat A and B visibility to 1½ SM.		

AFIS 125.0	ANCHORAGE CENTER 132.75 282.35	DILLINGHAM RADIO 123.6 (CTAF) 0
---------------	-----------------------------------	------------------------------------



5000 ↑ tr 196°		FISAX	VGSI and RNAV glidepath not coincident (VGSI Angle 3.00/TCH 57).			ELEV 82	D	TDZE 81
See planview for multiple IF locations.								
CATEGORY			A	B	C			D
RNP 0.10 DA			429-1 348 (400-1)		NA			
RNP 0.20 DA			468-1 387 (400-1)		NA			
RNP 0.30 DA			596-1 515 (600-1)		NA			
AUTHORIZATION REQUIRED								