

APP CRS  
**015°**

Rwy Idg  
TDZE  
82

Apt Elev  
82

RNAV (RNP) Y RWY 1

DILLINGHAM (DLG)(PADL)

RNP AR APCH - GPS.

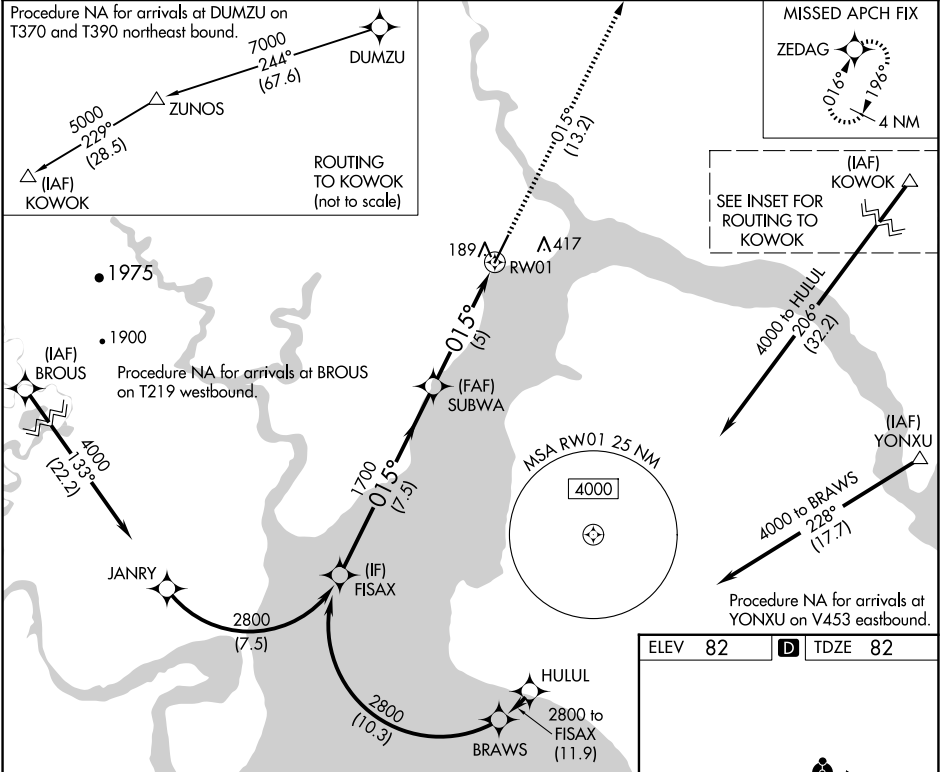
For uncompensated Baro-VNAV systems, procedure NA below -20°C or above 54°C.

MISSED APPROACH: Climb to 6000 on track 015° to ZEDAG and hold, continue climb-in-hold to 6000.

AFIS  
**125.0**

ANCHORAGE CENTER  
**132.75 282.35**

DILLINGHAM RADIO  
**123.6 (CTAF) 0**



FISAX

2800

015°

1700

SUBWA

1700

RW01

GP 3.00°  
TCH 45

7.5 NM

5 NM

6000  
↑  
tr 015°

ZEDAG

CATEGORY	A	B	C	D
RNP 0.15 DA		367-1	285 (300-1)	
RNP 0.30 DA		437-1	355 (400-1)	

AUTHORIZATION REQUIRED

REIL Rwy 19  
HIRL Rwy 1-19 0