

LOC/DME I-DLG 111.9 Chan 56	APP CRS 196°	Rwy Idg 6400 TDZE 81 Apt Elev 82
---	------------------------	---

LOC RWY 19
DILLINGHAM (DLG)(PADL)

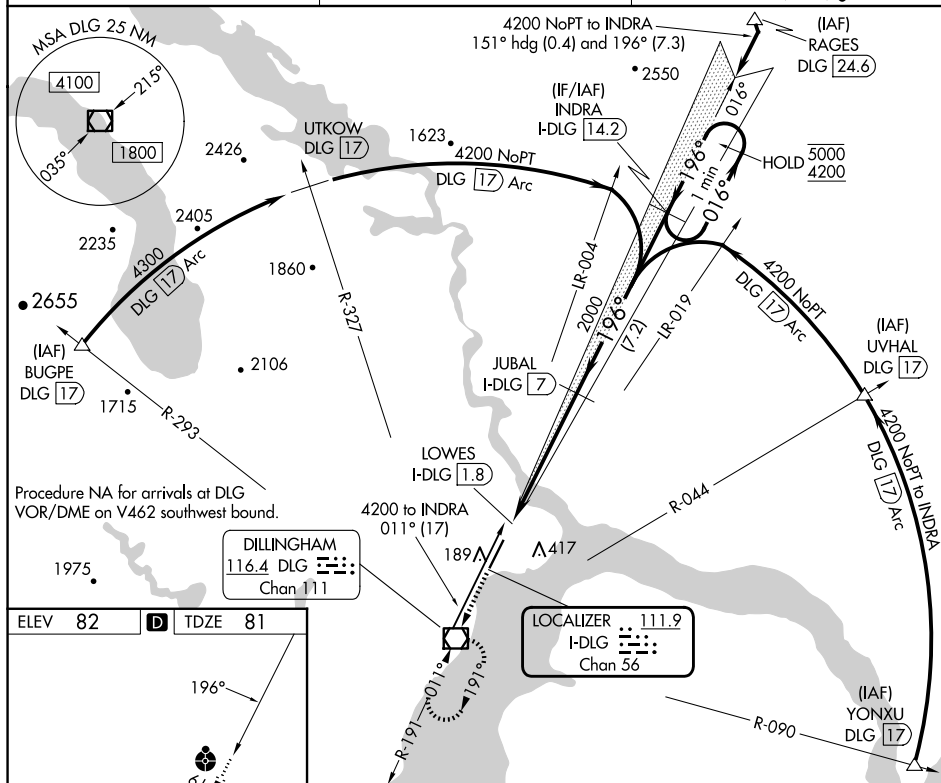
DME required.

- ⚠** Circling NA east of Rwy 1-19. VDP NA with Manokotak altimeter setting. When local altimeter setting not received, use Manokotak altimeter setting and increase all MDA's 40 feet and S-LOC 19 visibility Cat C/D $\frac{1}{8}$ SM. Inop table does not apply to S-LOC 19 Cats A/B. Inop table does not apply when using Manokotak altimeter setting. Rwy 19 helicopter visibility reduction below $\frac{3}{4}$ SM NA.

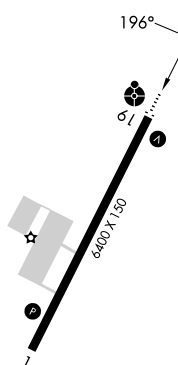
ODALS

MISSED APPROACH: Climb to 4200 direct DLG VOR/DME and hold, continue climb-in-hold to 4200.

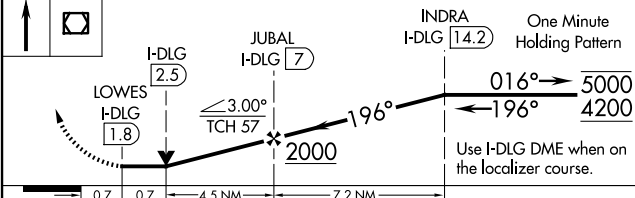
AFIS 125.0	ANCHORAGE CENTER 132.75 282.35	DILLINGHAM RADIO 123.6 (CTAF) 0
---------------	-----------------------------------	------------------------------------



ELEV 82	D	TDZE 81
---------	----------	---------



4200	DLG	LOC unusable from I-DLG 1.8 DME inbound.
------	-----	--



CATEGORY	A	B	C	D
S-LOC 19	560-1 479 (500-1)		560-1¼ 479 (500-1¼)	
CIRCLING	560-1 478 (500-1)		700-1¾ 618 (700-1¾)	700-2 618 (700-2)

DILLINGHAM, ALASKA
Amdt 8A 20FEB25

59°03'N-158°30'W

DILLINGHAM (DLG)(PADL)
LOC RWY 19

AK, 12 JUN 2025 to 07 AUG 2025

AK, 12 JUN 2025 to 07 AUG 2025