

WAAS Ch 70312 W18A	APP CRS 183°	Rwy Idg 4939 TDZE 1351 Apt Elev 1353
--	------------------------	---

RNAV (GPS) RWY 18

SPRINGDALE MUNI (ASG)

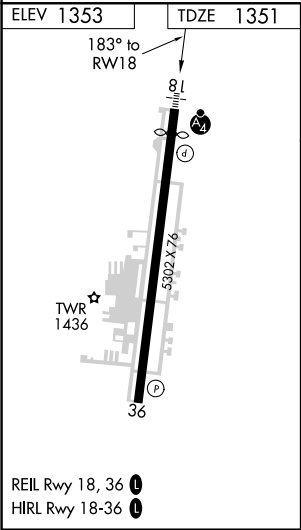
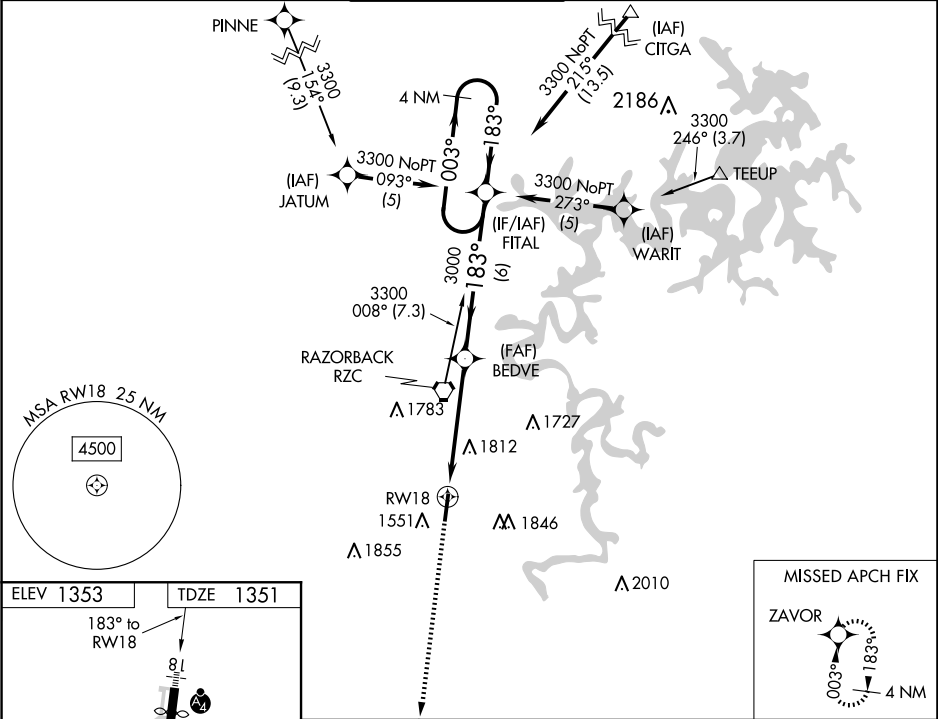
NA

DME/DME RNP-0.3 NA. Circling NA east of Rwy 18-36. When local altimeter setting not received, use Fayetteville/Drake Fld altimeter setting and increase all DA 39 feet and all MDA 40 feet; increase LPV all Cats and LNAV Cat C/D visibility $\frac{1}{8}$ mile, Circling Cat C/D visibility $\frac{1}{4}$ mile. For inoperative MALSf, increase LPV all Cats visibility to 1 mile, LNAV Cat C/D visibility to 2 miles. For inoperative MALSf when using Fayetteville/Drake Fld altimeter setting, increase LPV all Cats visibility to $1\frac{1}{8}$ mile, LNAV Cat C visibility to $2\frac{1}{4}$ mile. VDP NA when using Fayetteville/Drake Fld altimeter setting. Helicopter visibility reduction below $\frac{3}{4}$ SM NA.

MALSf

MISSED APPROACH:
Climb to 3800 direct ZAVOR and hold.

AWOS-3 124.675	RAZORBACK APP CON ★ 126.6 305.2	SPRINGDALE TOWER ★ 118.2 (CTAF) 0	GND CON 121.6	REIL 18, 36 122.8 0	UNICOM 122.95
--------------------------	---	---	-------------------------	-------------------------------	-------------------------



3800

↑

✦

ZAVOR

4 NM

Holding Pattern

* LNAV only

RW18

2.2 NM

to RW18

2.8 NM

6 NM

BEDVE

3000

183°

003°

3300

183°

GP 3.00°

TCH 45

CATEGORY	A		B	C	D
LPV DA	1642- ³ / ₄ 291 (300- ³ / ₄)				
LNAV/VNAV DA	NA				
LNAV MDA	2080- ³ / ₄ 729 (800- ³ / ₄)	2080-1 729 (800-1)	2080-1 ⁷ / ₈ 729 (800-1 ⁷ / ₈)		
CIRCLING	2080-1 727 (800-1)		2080-2 727 (800-2)	2220-2 ³ / ₄ 867 (900-2 ³ / ₄)	