

WAAS CH 72631 W35A	APP CRS 354°	Rwy Idg 4444 TDZE 324 Apt Elev 325
--	------------------------	---

RNAV (GPS) RWY 35

BRUCE CAMPBELL FLD (MBO)

RNP APCH - GPS.

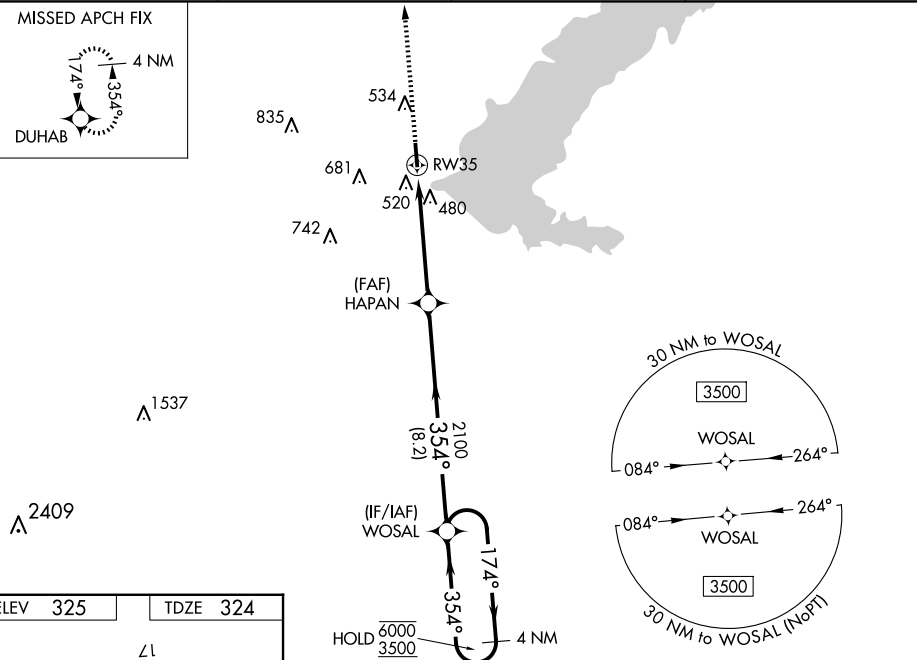


Rwy 35 helicopter visibility reduction below $\frac{3}{4}$ SM NA.
For uncompensated Baro-VNAV systems, LNAV/VNAV NA below -15°C or above 54°C.

MISSED APPROACH:
Climb to 2400 direct
DUHAB and hold.

AWOS-3PT 119.125	JACKSON APP CON ★ 123.9 317.7	CLNC DEL 125.9	UNICOM 122.8 (CTAF) 0
----------------------------	---	--------------------------	---------------------------------

MISSED APCH FIX



ELEV	325		TDZE	324
------	-----	--	------	-----

MIRL Rwy 17-35 **L**

MADISON, MISSISSIPPI
Amdt 1A 05OCT23

2400 ↑ DUHAB

VGS1 and RNAV glidepath not coincident (VGS1 Angle 4.00/TCH 54).

4 NM Holding Pattern

WOSAL

174° → 6000
← 354° 3500

354°

2100

2100

GP 3.30°
TCH 48

1 NM to RW35

1 NM 4 NM 8.2 NM

CATEGORY	A	B	C	D
LPV DA	643-7/8 319 (400-7/8)			
LNAV/VNAV DA	760-1 1/4 436 (500-1 1/4)			
LNAV MDA	780-1 456 (500-1)		780-1 3/8 456 (500-1 3/8)	
C CIRCLING	820-1 495 (500-1)	840-1 515 (600-1)	1040-2 715 (800-2)	1040-2 1/4 715 (800-2 1/4)

32°26'N-90°06'W

BRUCE CAMPBELL FLD (MBO)
RNAV (GPS) RWY 35