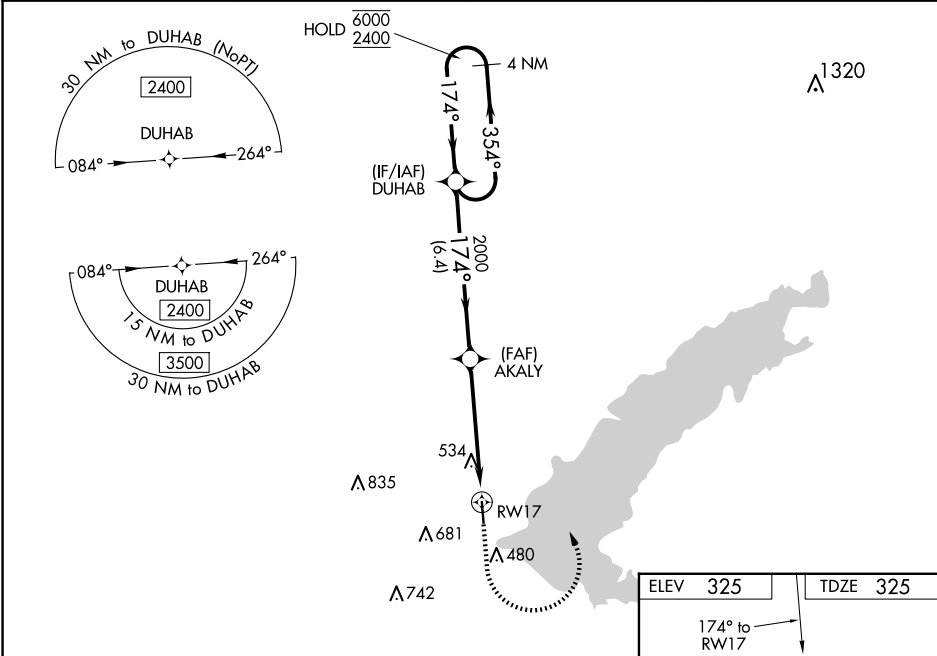


WAAS CH 69231 W17A	APP CRS 174°	Rwy Idg TDZE 325 Apt Elev 325
--	------------------------	---

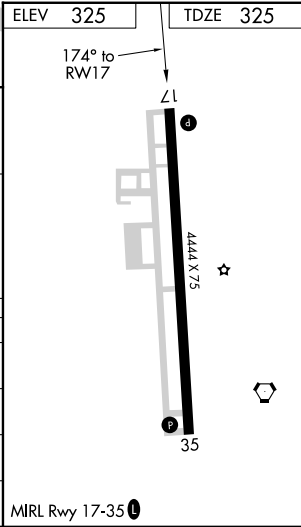
RNAV (GPS) RWY 17
BRUCE CAMPBELL FLD (MBO)

RNP APCH. ▼ Baro-VNAV and VDP NA when using Jackson-Medgar Wiley Evers Intl altimeter setting. ▲ Rwy 17 helicopter visibility reduction below ¾ SM NA. For uncompensated Baro-VNAV systems, LNAV/VNAV NA below -15°C or above 54°C. When local altimeter setting not received, use Jackson-Medgar Wiley Evers Intl altimeter setting and increase all DA 21 feet and all MDA 40 feet, and increase LNAV/VNAV visibility ⅛ SM, and Circling Cats C/D visibility ¼ mile.	MISSED APPROACH: Climb to 1200 then climbing left turn to 2400 direct DUHAB and hold.
--	---

AWOS-3PT 119.125	JACKSON APP CON ★ 123.9 317.7	CLNC DEL 125.9	UNICOM 122.8 (CTAF) 0
----------------------------	---	--------------------------	---------------------------------



4 NM Holding Pattern DUHAB		1200	2400	DUHAB
6000 ← 354° 2400 → 174°		AKALY	2000	
GP 3.00° TCH 40		*1.4 NM to RWY17	RWY17	*LNAV only
6.4 NM		3.7 NM	1.4 NM	
CATEGORY	A	B	C	D
LPV DA	600-7⅞ 275 (300-7⅞)			
LNAV/VNAV DA	832-1⅓ 507 (600-1⅓)			
LNAV MDA	800-1	475 (500-1)	800-1⅓	475 (500-1⅓)
CIRCLING	820-1 495 (500-1)	840-1 515 (600-1)	1040-2 715 (800-2)	1040-2¼ 715 (800-2¼)



SC-4, 10 JUL 2025 to 07 AUG 2025

SC-4, 10 JUL 2025 to 07 AUG 2025