

TACAN RWY 30

| | | |
|-----------|----------|----------------|
| TACAN NSI | APCH CRS | Rwy Idg |
| Chan 39 | 290° | TDZE 506 |
| | | Arprt Elev 506 |

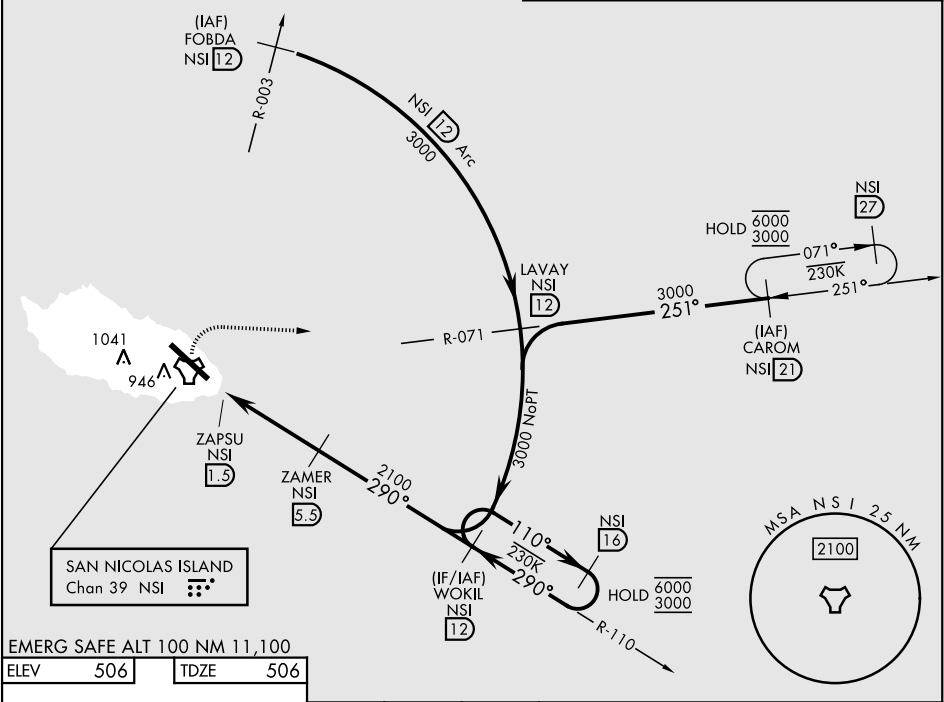
[USN]

SAN NICOLAS ISLAND NOLF (KNSI)

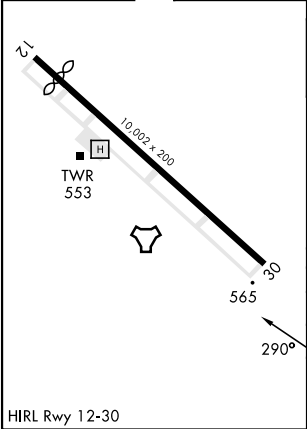
| | |
|--|---|
| RADAR required | MISSED APPROACH: Climb to 1000, then climbing right turn to 3000, intercept NSI TACAN R-071 to LAVAY. Arc south on 12 DME arc to WOKIL. |
| * Circling not authorized SW of Rwy 12-30. | |

TOWER ★
126.85 379.3

| | | | | | | |
|--|-----|-----|-----|-----|------|------|
| Knots | 60 | 120 | 180 | 240 | 300 | 360 |
| V/V(fpm) | 242 | 484 | 726 | 968 | 1210 | 1452 |
| #Min climb of 242 ft/NM to 1400 - Controlling Obstacle Unk | | | | | | |



| | | | |
|------------------------------|-----|------|-----|
| EMERG SAFE ALT 100 NM 11,100 | | | |
| ELEV | 506 | TDZE | 506 |



| | | | | | | |
|-----------|----------------------|-----------------------|------------------------|--------------------|------|-----------|
| 1000 | 3000 | LAVAY NSI R-071 | WOKIL NSI 12 | | | NSI 16 |
| ↑ | ↷ | | ZAMER NSI 5.5 | 110° | 6000 | 3000 |
| NSI TACAN | ZAPSU NSI 1.5 | | 2100 | 290° | | |
| | | 3.00° TCH 50 | | | | |
| 0.8 | 4 NM | | | | | |
| CATEGORY | A | B | C | D | E | |
| S-30 # | 820-1 | | 314 | (400-1) | | |
| S-30 | 920-1 | 414 | (500-1) | 920-1½ | 414 | (500-1½) |
| CIRCLING* | 920-1 414 (500-1) | 960-1 454 (500-1) | 960-1½ 454 (500-1½) | 1060-2 554 (600-2) | | |

TACAN RWY 30

SW-3, 10 JUL 2025 to 07 AUG 2025

SW-3, 10 JUL 2025 to 07 AUG 2025