

WAAS Ch 40317 W10A	APP CRS 097°	Rwy Idg TDZE Apt Elev	5000 14 20
--	------------------------	-----------------------------	---------------------------------------

RNAV (GPS) RWY 10

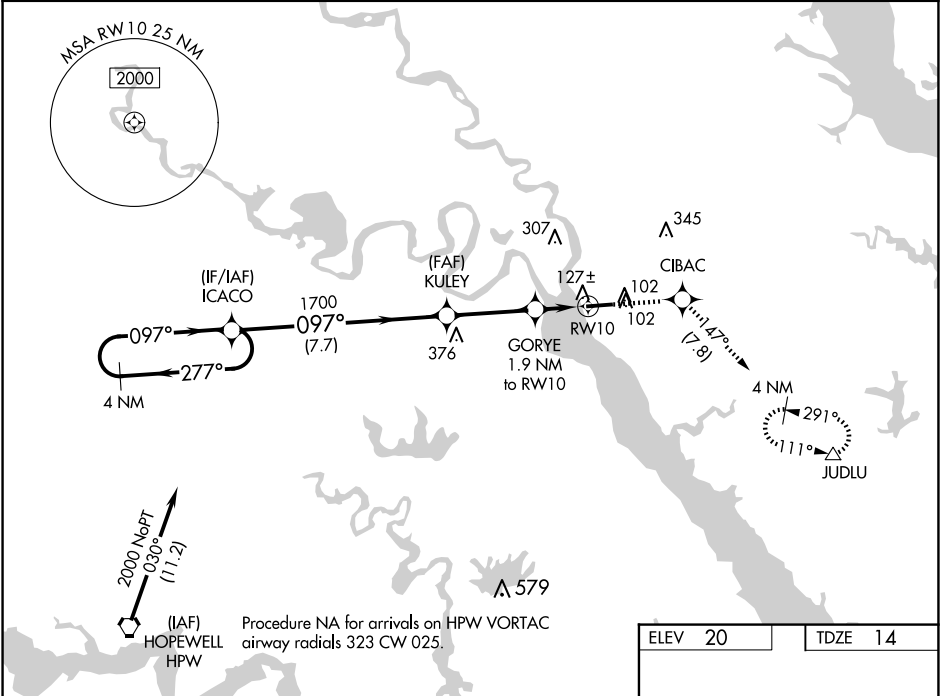
MIDDLE PENINSULA RGNL (F'YJ)

⚠

For uncompensated Baro-VNAV systems, LNAV/VNAV NA below -15°C (5°F) or above 54°C (130°F). Baro-VNAV and VDP NA when using Newport News altimeter setting. DME/DME RNP-0.3 NA. When local altimeter setting not received, use Newport News altimeter setting: increase LPV DA to 329 feet; increase LNAV/VNAV DA to 420 feet and Cats A/B visibility ¼ SM; increase all MDA 80 feet.

MISSED APPROACH: Climb to 2000 direct CIBAC and on track 147° to JUDLU and hold.

AWOS-3 132.825	POTOMAC APP CON 126.4 282.375	UNICOM 123.0 (CTAF) 0
--------------------------	---	---------------------------------



VGSI and RNAV glidepath not coincident (VGSI Angle 3.50/TCH 53).
4 NM Holding Pattern

ICACO

KULEY

GORYE

RW10

2000

1700

1700

127±

102

291

GP 3.00°
TCH 45

7.7 NM

3.2 NM

1.1 NM

0.8 NM

CATEGORY

A

B

C

D

LPV DA	264-1	250 (300-1)		NA
LNAV/VNAV DA	355-1¼	341 (400-1¼)		NA
LNAV MDA	380-1	366 (400-1)		NA
CIRCLING	480-1 460 (500-1)	620-1 600 (600-1)		NA

ELEV 20

TDZE 14

2000

CIBAC

tr 147°

JUDLU

*RNAV only

5000 X 75

097°

MIRL Rwy 10-28

REIL Rwy 10 and 28