

WAAS CH 65722 W31A	APP CRS 310°	Rwy Ldg TDZE 1345 Apt Elev 1354
--	------------------------	---

RNAV (GPS) RWY 31
RANGE RGNL (HIB)

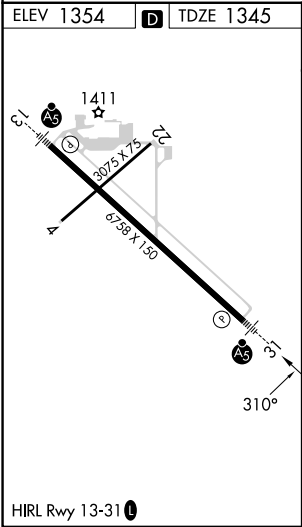
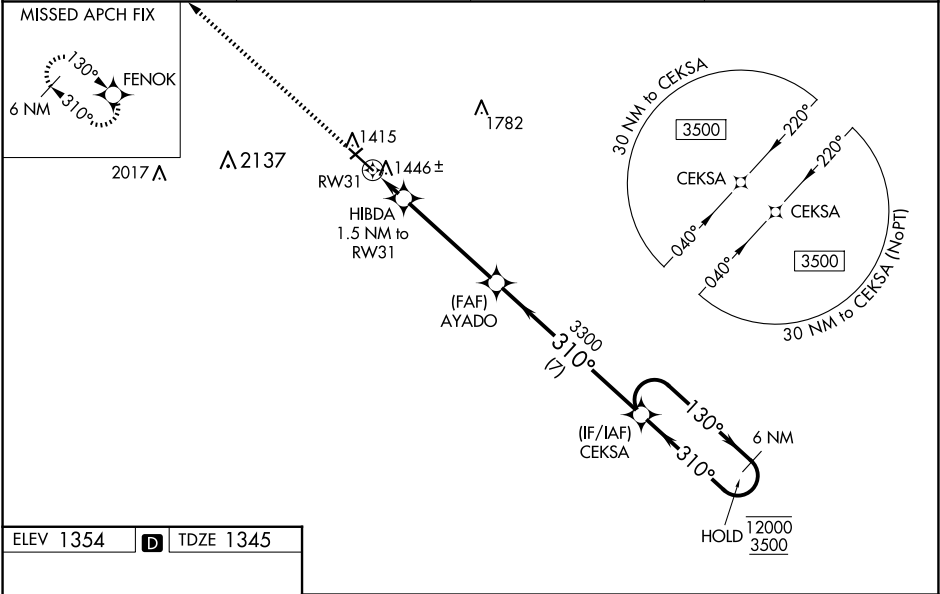
RNP APCH - GPS.

Baro-VNAV and VDP NA when using Eveleth altimeter setting. For uncompensated Baro-VNAV systems, LNAV/VNAV NA below -17°C or above 54°C. When local altimeter setting not received, use Eveleth altimeter setting and increase LPV DA to 1581 feet; increase LNAV/VNAV DA to 1643 feet; increase all MDAs 40 feet; and Circling visibility Cat C ¼ SM. For inop ALS, increase LNAV/VNAV all Cats visibility to ¾ SM, LNAV Cat C/D to 1 SM. For inop ALS when using Eveleth altimeter setting, increase LNAV/VNAV all Cats visibility to ¾ SM.

MALSR

MISSED APPROACH: Climb to 3500 direct FENOK and hold.

ASOS 126.425	DULUTH APP CON 125.45 233.7	CLNC DEL 127.4	UNICOM 123.0 (CTAF) 0
------------------------	---------------------------------------	--------------------------	---------------------------------



3500	FENOK	VGSI and RNAV glidepath not coincident (VGSI Angle 2.90/TCH 62).				CEKSA	6 NM Holding Pattern
		HIBDA 1.5 NM to RW31	AYADO 3300				
		1 NM to RW31	3300				
		1860					
		1 NM	0.5	4.5 NM	7 NM		
CATEGORY	A	B	C	D			
LPV DA	1545-½ 200 (200-½)						
LNAV/VNAV DA	1607-½ 262 (300-½)						
LNAV MDA	1700-½ 355 (400-½)	1700-5/8 355 (400-5/8)					
CIRCLING	1900-1 546 (600-1)	1920-1½ 566 (600-1½)		1980-2 626 (700-2)			

NC-1, 10 JUL 2025 to 07 AUG 2025

NC-1, 10 JUL 2025 to 07 AUG 2025