

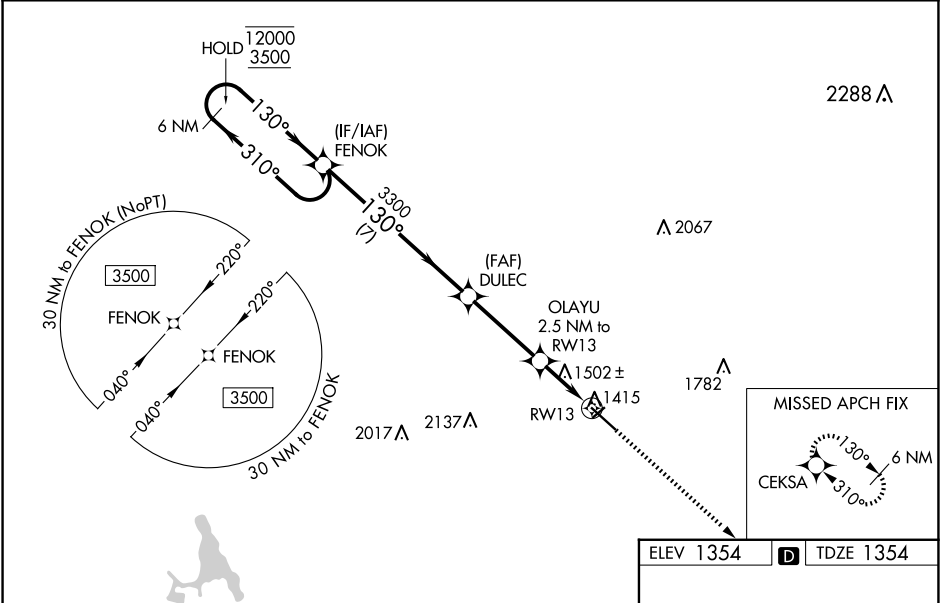


WAAS CH 69222 W13A	APP CRS 130°	Rwy Ldg TDZE 1354 Apt Elev 1354
--	------------------------	---

RNAV (GPS) RWY 13

RANGE RGNL (HIB)

RNP APCH - GPS.			<div>MALSR</div> <div></div>	MISSED APPROACH: Climb to 3500 direct CEKSA and hold.
<div><div><div></div><div>-40°C</div></div><div>Baro-VNAV and VDP NA when using Eveleth altimeter setting. For uncompensated Baro-VNAV systems, LNAV/VNAV NA below -17°C or above 54°C. When local altimeter setting not received, use Eveleth altimeter setting and increase LPV DA to 1640 feet; increase LNAV/VNAV DA to 1766 feet and all visibilities ½ SM. Increase all MDAs 40 feet and LNAV visibility Cat C/D ⅓ SM, and Circling visibility Cat C ¼ SM. For inop ALS, increase LNAV/VNAV all Cats visibility to 1 SM. For inop ALS when using Eveleth altimeter setting, increase LPV all Cats visibility to ¾ SM, LNAV/VNAV all Cats to 1 ⅓ SM, LNAV Cat C/D to 1 ⅓ SM.</div></div>				
ASOS 126.425	DULUTH APP CON 125.45 233.7	CINC DEL 127.4	UNICOM 123.0 (CTAF) 0	



6 NM Holding Pattern		FENOK		DULEC		OLAYU 2.5 NM to RW13		3500 ↑		CEKSA ✦	
12000 3500		←310° 130°→		130°		3300		1.2 NM to RW13		RW13	
GP 3.00° TCH 48		7 NM		3.5 NM		1.3 NM		1.2 NM			
CATEGORY		A		B		C		D			
LPV DA		1604-½		250 (300-½)							
LNAV/ VNAV DA		1730-5⁄8		376 (400-5⁄8)							
LNAV MDA		1800-½		446 (500-½)		1800-7⁄8		446 (500-7⁄8)			
CIRCLING		1900-1		546 (600-1)		1920-1½ 566 (600-1½)		1980-2 626 (700-2)			

HIRL Rwy 13-31