

LOC I-HIB	APP CRS	Rwy Ldg	6758
108.75	310°	TDZE	1345
		Apt Elev	1354

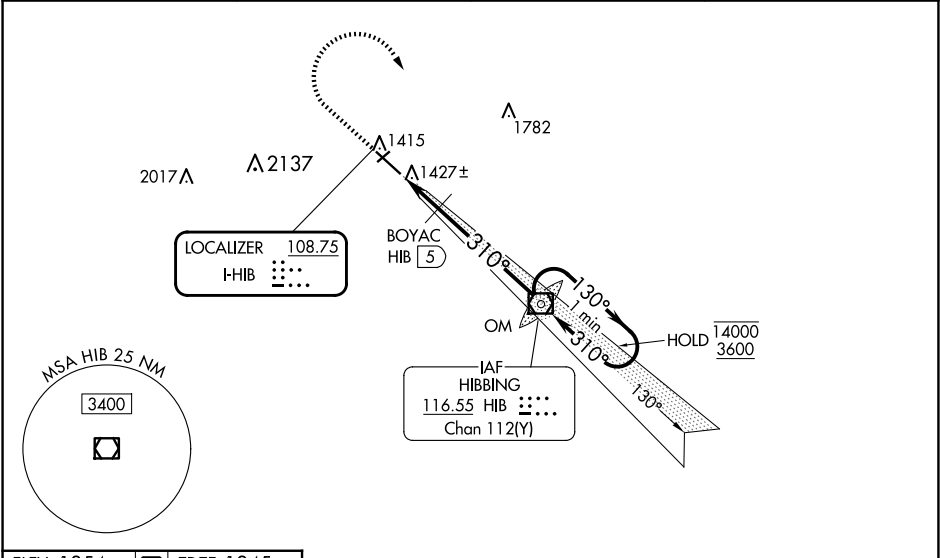
ILS or LOC RWY 31  
RANGE RGNL (HIB)

VDP NA when using Eveleth altimeter setting. Caution opposing ILS continuously on. When local altimeter setting not received, use Eveleth altimeter setting and increase S-ILS 31 DA to 1581 feet; increase all MDAs 40 feet and increase S-LOC 31 Cat C/D visibility ½ SM and Circling Cat C ¼ SM. Increase BOYAC fix minimums S-LOC 31 Cat C/D visibility ½ SM and Circling Cat C ¼ SM. For inop ALS when using Eveleth altimeter setting, increase BOYAC fix minimums S-LOC 31 Cat C/D visibility to 1 SM. \*1780 when using Eveleth altimeter setting. #DME from HIB VOR/DME. DME use requires simultaneous reception of I-HIB and HIB DME.

MALSR

MISSED APPROACH:  
Climb to 2500 then  
climbing right turn to  
3600 direct HIB  
VOR/DME and hold.

ASOS 126.425	DULUTH APP CON 125.45 233.7	CLNC DEL 127.4	UNICOM 123.0 (CTAF)
-----------------	--------------------------------	-------------------	------------------------






ELEV 1354 TDZE 1345

HIRL Rwy 13-31

FAF to MAP 6.9 NM

Knots	60	90	120	150	180
Min:Sec	6:54	4:36	3:27	2:46	2:18

2500	3600	HIB			
					
			BOYAC HIB 5	HIB VOR/DME OM 3558	One Minute Holding Pattern

NC-1, 10 JUL 2025 to 07 AUG 2025

NC-1, 10 JUL 2025 to 07 AUG 2025