

LOC I-JAE <u>111.75</u>	APP CRS 130°	Rwy Ldg 6758 TDZE 1354 Apt Elev 1354
-----------------------------------	------------------------	---

ILS or LOC RWY 13
RANGE RGNL (HIB)

DME required.

Autopilot coupled approach NA below 2515. VDP NA when using Eveleth altimeter setting. Caution opposing ILS continuously on. When local altimeter setting not received, use Eveleth altimeter setting and increase S-HLS 13 DA to 1590 feet; increase all MDAs 40 feet and S-LOC 13 visibility Cat B/C/D $\frac{1}{4}$ SM, and Circling visibility Cat B/C/D $\frac{1}{4}$ SM. For inop ALS, increase S-LOC 13 Cat C/D visibility to 2 SM. For inop ALS when using Eveleth altimeter setting, increase S-LOC 13 Cat C/D visibility to 2 SM.

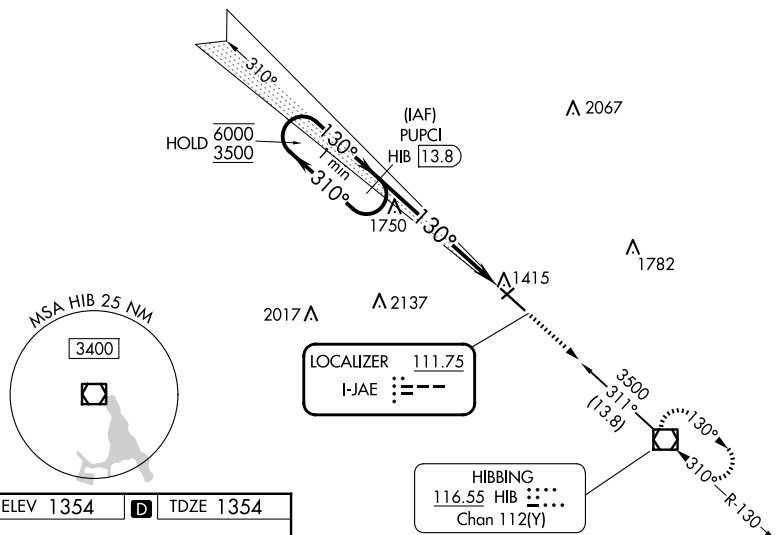
MALSR



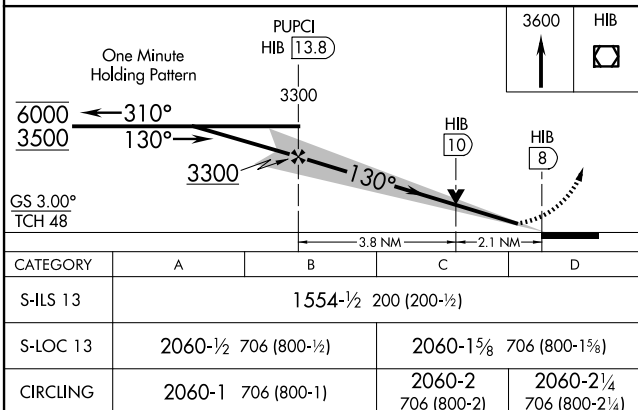
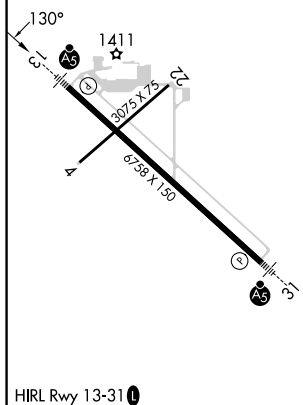
MISSED APPROACH:
Climb to 3600 direct
HIB VOR/DME and
hold.

ASOS 126.425	DULUTH APP CON 125.45 233.7	CLNC DEL 127.4	UNICOM 123.0 (CTAF) ①
------------------------	---------------------------------------	--------------------------	---------------------------------

2288 A



ELEV 1354	D	TDZE 1354
-----------	----------	-----------



HIBBING, MINNESOTA

Amdt 1B 21MAR24

RANGE RGNL (HIB)

47°23'N-92°50'W

ILS or LOC RWY 13